

Building 50: A Bremerton Legacy

Welcome to historic Building 50!

You are standing in front of one of the first buildings erected at the Puget Sound Naval Shipyard & Intermediate Maintenance Facility (PSNS & IMF). The U.S. Navy constructed Building 50 in 1896 to serve as the Shipyard's administrative headquarters.

Building 50 may look like a house, but it was not built as a residence. Instead, it functioned as the center for administrative and social activities within the Shipyard.



Photo caption: Building 50's original location offered sweeping views of Sinclair Inlet and a growing Shipyard.

The Life of Building 50

For most of its history, Building 50 sat inside the Shipyard gates. It has been relocated three times to make room for construction projects.

Photo: Merge these into one **map** showing all locations of Building 50. Arrows point to a photo of the building in that space, as well as a caption for each.

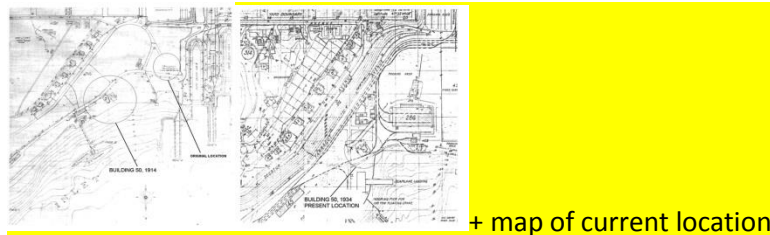


Photo caption: When Dry Dock 2 was built in 1910, the building was moved west to make room.



Photo caption: Building 50 was moved to Farragut Avenue to make way for Dry Dock 5 in 1939.

Photo of most recent move

Photo caption: In 2004, the building moved to its present location along the Bremerton waterfront.

Throughout its history, Building 50 has served many functions, including:

- Offices for Shipyard commandants through the 1910s
- Chemistry lab in 1920

Photo: Apprentice class in front of Building 50

- Apprentice school from 1920 until 1933
- *Salute* newsletter and Gas Rations Board offices during World War II
- A dispensary and ship offices in the postwar years
- Home of the Puget Sound Navy Museum since 2007

A New Purpose: Puget Sound Navy Museum

In 2004, the Shipyard relocated Building 50 to its present location where it was renovated and donated by the Navy to the City of Bremerton. The Puget Sound Navy Museum officially reopened here on August 25, 2007. The museum offers almost 8,000 square feet of exhibition space, allowing visitors to explore the naval history of the Pacific Northwest.

An Architectural Icon

- Date of Construction: 1896
- Initial cost: \$7,900
- Designed by Chamberlin and Siebrand, a prominent Seattle architectural firm
- Classical Revival style
- Wood frame construction
- Original building 88'x78', plus several later additions
- Total height: 32'

Building 50 Has Style

Its refined architectural style reflects the prominence of the shipyard commanders who initially occupied the building. In spite of three moves, Building 50 has retained most of its exterior architectural features. Interior staircases provide a hint of the building's original styling.

Photo: Modern image of front of building. To be accompanied by arrows pointing out each of these architectural features.

Classical Revival buildings are elaborate, symmetrical, imposing, and timeless. Look for these features on Building 50:

- Hipped roof
- Hipped roof dormer windows
- Ionic columns
- Shallow portico (porch) capped by a second-story triangular pediment
- Raised foundation veneered with simulated stone
- Dentils
- Cornices



Photo caption:

The building has seen many changes over the past century. When initially built:

- A “widow’s walk” balcony at the back of the roof took advantage of the building’s view of the inlet.
- A majestic eagle ornament sat at the peak of the roofline.
- Four long-gone fireplaces were shown in the original building plans.
- The building was originally white, but has been painted many times over its history. During World War II, it sported a camouflage paint scheme. During the Korean War, it was “battleship gray.”

Building 50 has also been expanded twice:

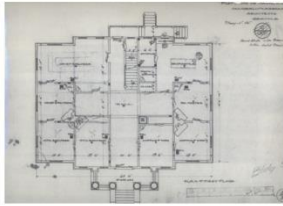


Photo caption: A 1903 addition to the rear of the building can be seen in this 1907 postcard. It was designed in a matching classical revival style, but is distinguished by a slight set back from the plane of the original building.

Photo: Modern image of building

Photo caption: After the building was moved in 2004, an addition provided an event space offering sweeping views of the park and waterfront.

Other Images



Original blueprint



1903



Puget Sound Navy Museum

A Proud Museum for a Proud Navy



**JOIN US IN CELEBRATING THE PUGET
SOUND NAVY MUSEUM'S 60TH BIRTHDAY IN
DECEMBER, 2014**



1951 - Karl Wood, Shop
07 Plannerman,
proposes museum

1953 - Rear Admiral
Homer N. Wallin
encourages Puget Sound
Naval Shipyard Museum

The Museum Idea Takes Hold



Salute Newsletter, 1953:

“The past is not dead unless it is left to die. The past is not useless unless we fail to use it. A museum can show us that the Navy is old and mighty – also, that it is a modern institution, still growing, still in change”



**Grand
Opening
December 3,
1954**

Local naval recreation facility, *Craven Center*, houses the museum

Mission: *“To instruct the present in the achievements of a proud Yard and the history of a proud Navy”*



Craven Center Museum



A Museum on the Move

Craven Center Declared Surplus by Navy

Museum Reopened on March 19, 1967 in Bremerton's Ferry Terminal

Ferry Terminal Replaced in 1986; Museum Moves Again



1986-2002

130 Washington Ave

Known as Bremerton Navy Memorial Museum, also
Naval Memorial Museum of the Pacific

420 4th Street: A Museum in Transition

2002-2007



A Permanent Home



The Museum
Moves to
Historic
Building 50

Over six
decades, the
artifact
collection has
been moved
four times





Welcome to Historic Building 50!

The Puget Sound Navy Museum officially reopened in Building 50 on August 25, 2007



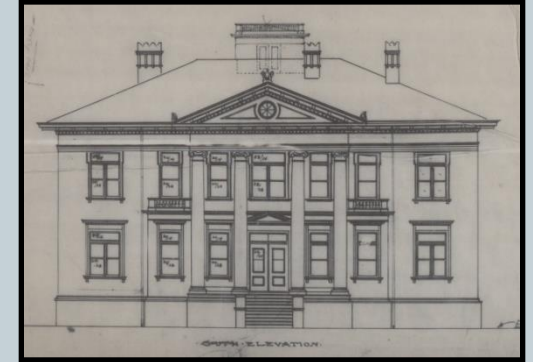
The History of Building 50



1896: First Administrative Headquarters at Puget Sound Navy Yard

Building 50 has served many functions: shipyard commandant office space, apprentice school, dispensary, and administrative space

It has been moved several times, most recently in 2004



Building 50 South
Elevation Draft, 1895



The museum is now housed in an 118-year-old building that has been relocated three times





**Our Location:
251 1st Street**

**Bremerton's
Harborside
Park**



Our Exhibits



**USS John C.
Stennis**



*Explore the naval history of the
region and experience life as a
sailor*

**A Heritage of
Excellence: The
Puget Sound
Naval Shipyard**



**Special
Operations
Submarines**



Temporary Exhibits: 22 Since 2007



Working from
"Up to Vietnam"
is a traveling
exhibit designed by
ME GAVIN GRIFFITH

Marking Time

0 Tap 7³⁰ Sgdn 17⁰⁰ AIR CAV.
15 Oct. 1967

VOYAGE TO VIETNAM

EXHIBIT OPEN
1 JUNE-31 AUGUST 2013

PUGET SOUND NAVY MUSEUM | 251 First Street, Bremerton | 360.479.7447



Our Museum



Parche Sail



Entrance



Family Discovery Room

Official U.S. Navy Museum



PSNM became an official U.S. Navy Museum in March of 2008. It is now one of twelve official U.S. Navy museums.

AAM Accreditation



**American
Alliance of
Museums**

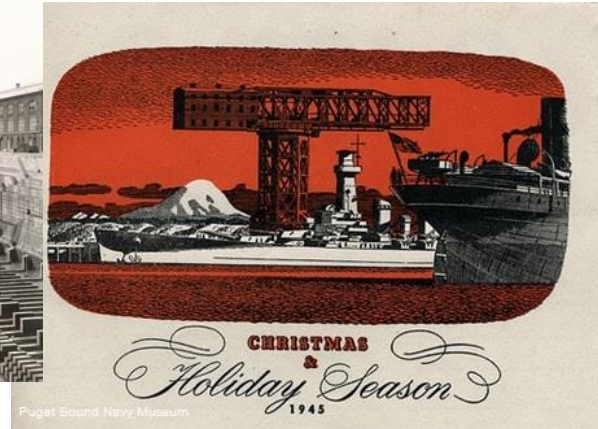
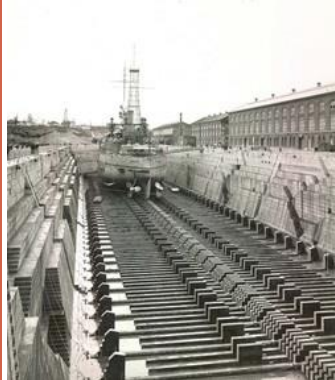
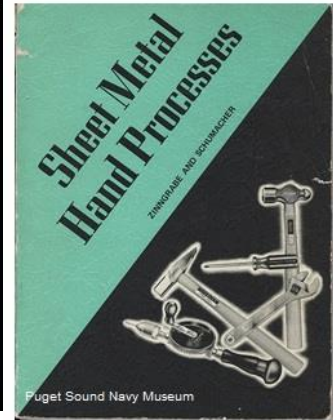
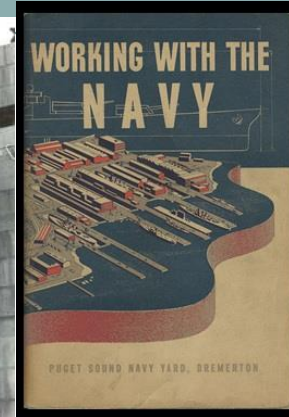
Champion Museums. Nurture Excellence.



PSNM was awarded accreditation by the American Alliance of Museums in the fall of 2013. We are very proud of this prestigious distinction!



Our Collection



More than 20,000 artifacts including:
Ship models, bells, plaques, uniforms,
tools, badges, photographs, and archival
materials

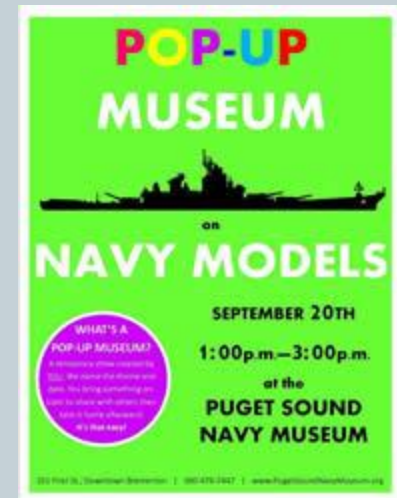


Our Visitors

Set SAIL Summer Programming



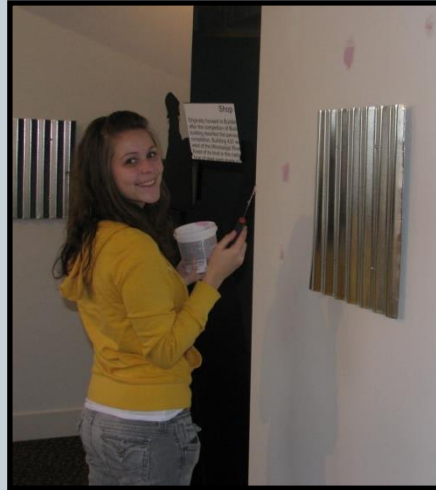
PSNM attracts approximately 70,000 visitors each year



Our Great Volunteers!



PSNS & IMF Shop 17
Apprentices



Internships



Seabee Assistance



Please join us in celebrating as we look forward to the next 60 years at PSNM!



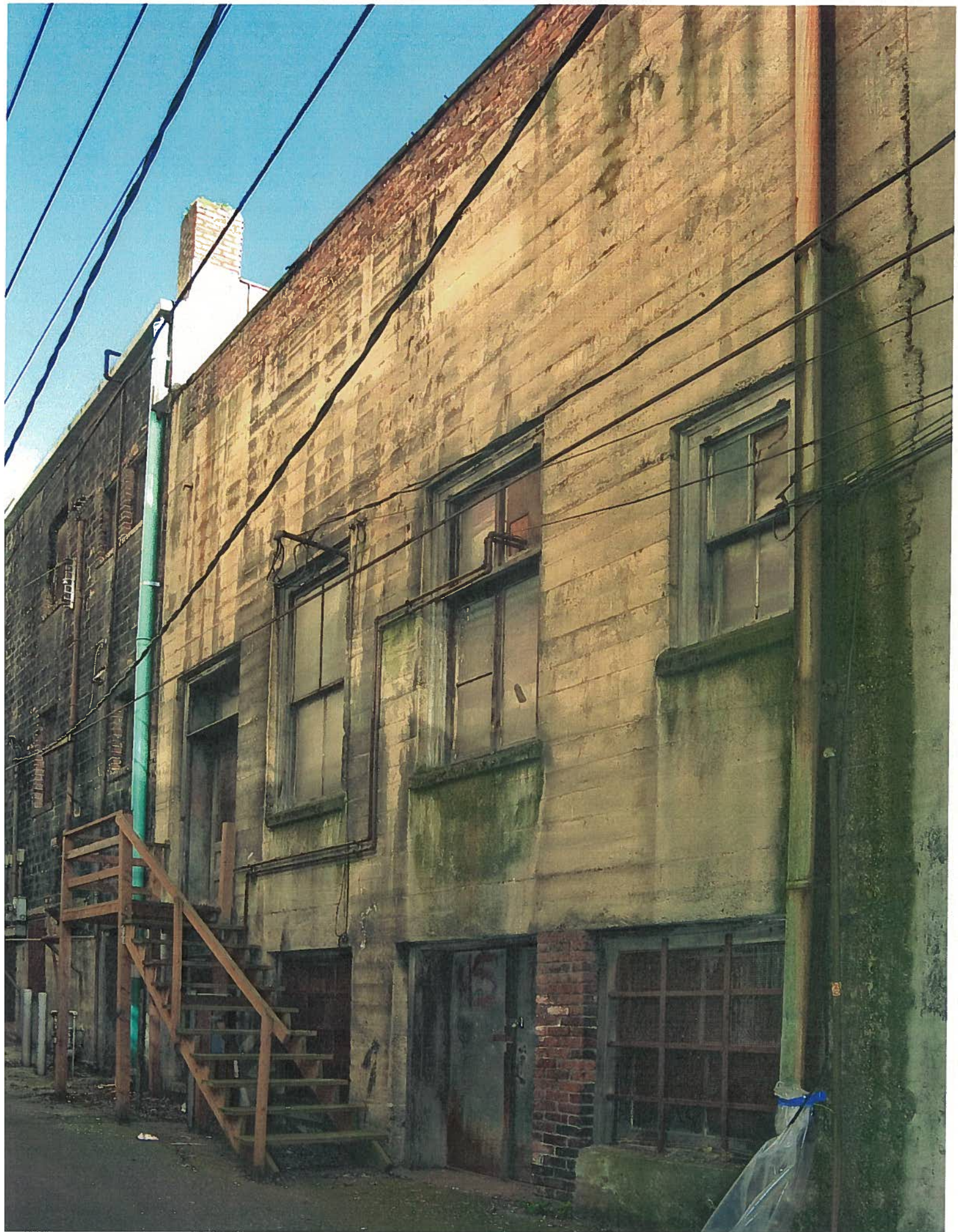
Fall Hours:
10:00am-4:00pm; Closed on Tuesday

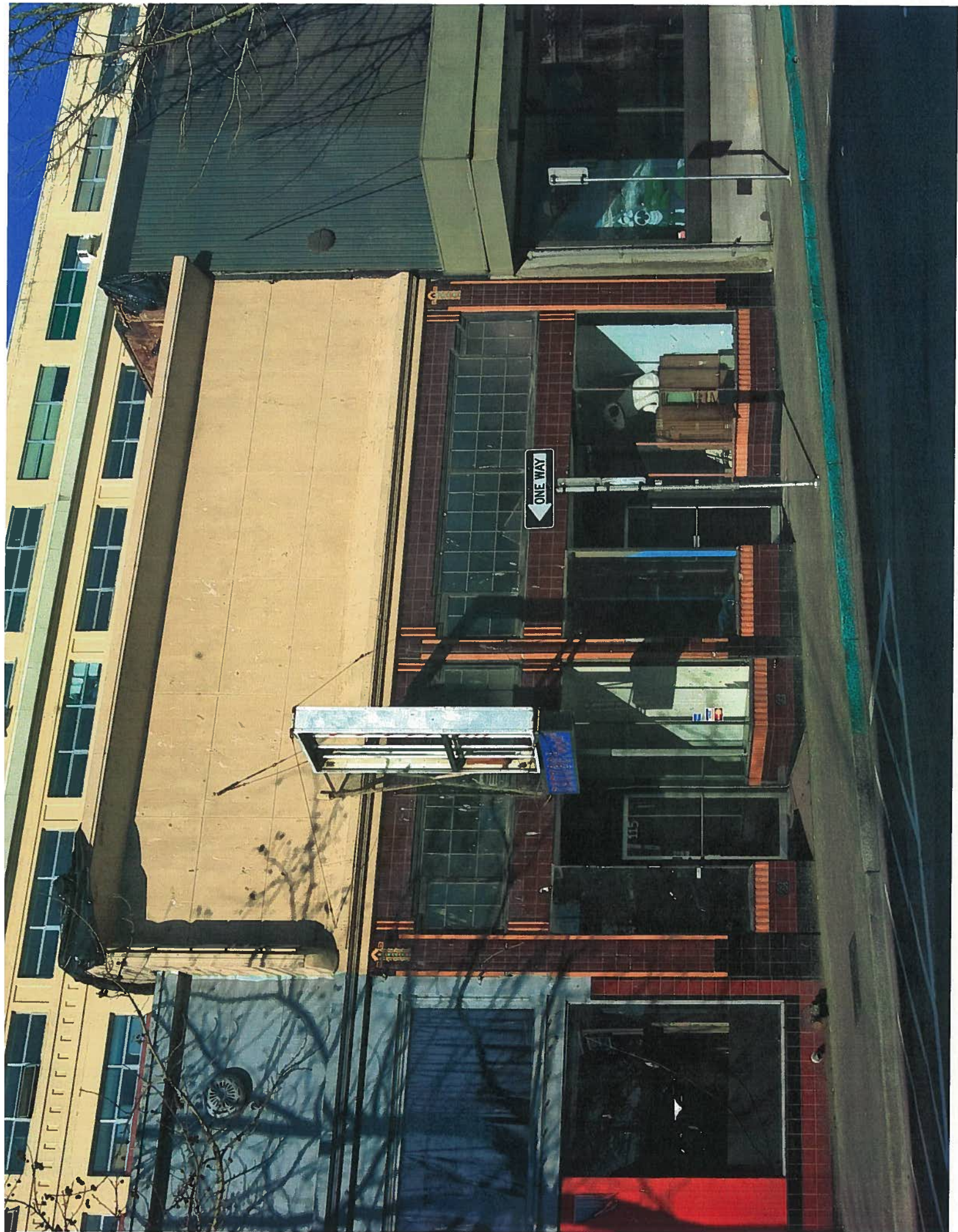
www.pugetsoundnavymuseum.org



DISTRIBUTION STATEMENT A:
APPROVED FOR PUBLIC
RELEASE; DISTRIBUTION IS
UNLIMITED
DIG05-0525 1-20-05

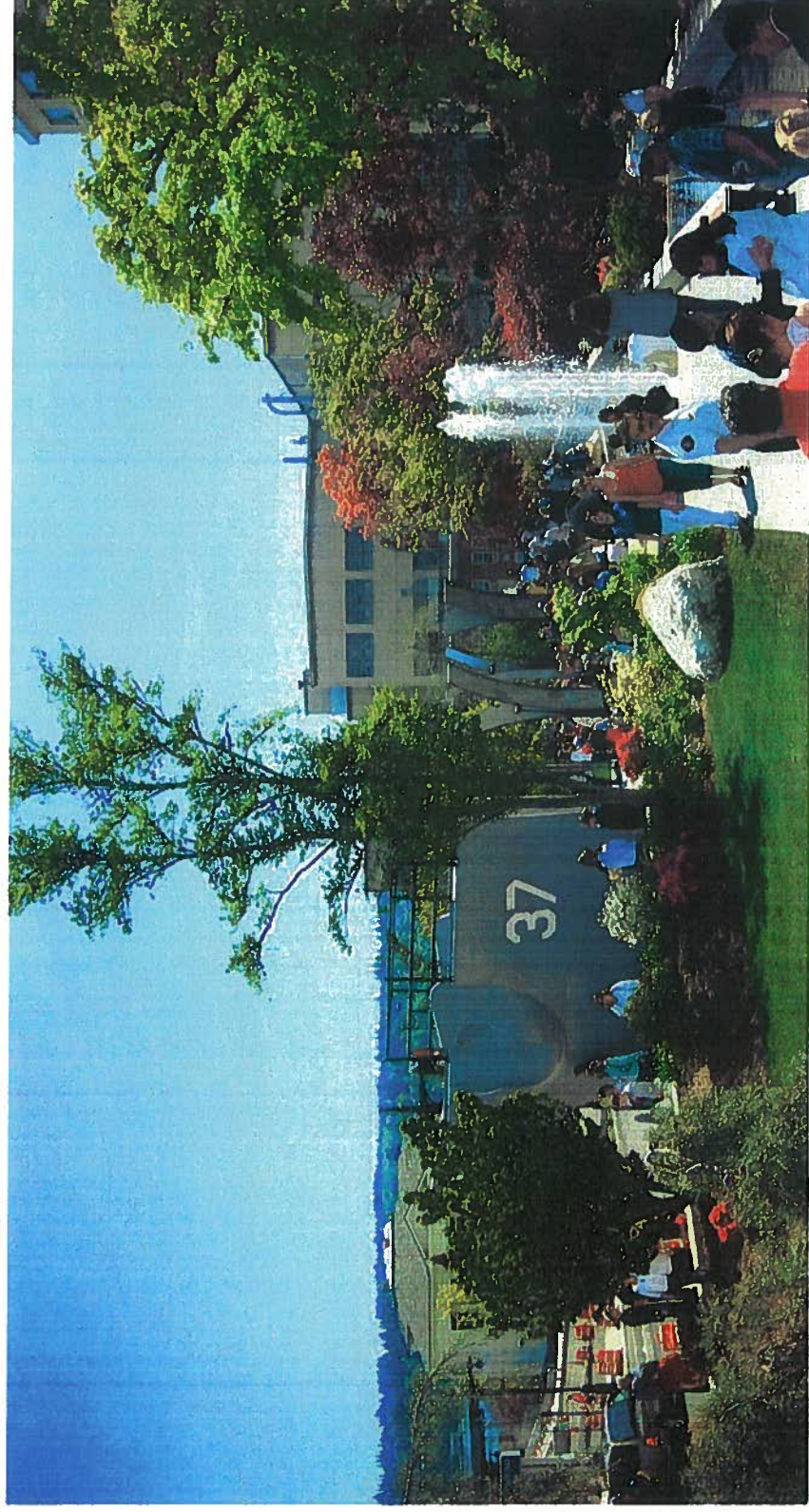






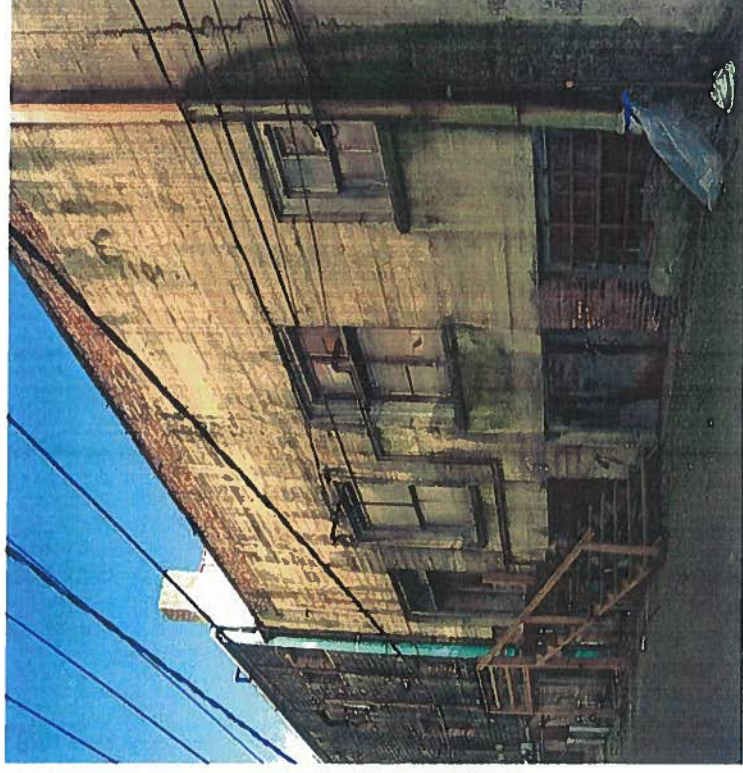
PSNS MEMORIAL PLAZA

After



PSNS MEMORIAL PLAZA

Before





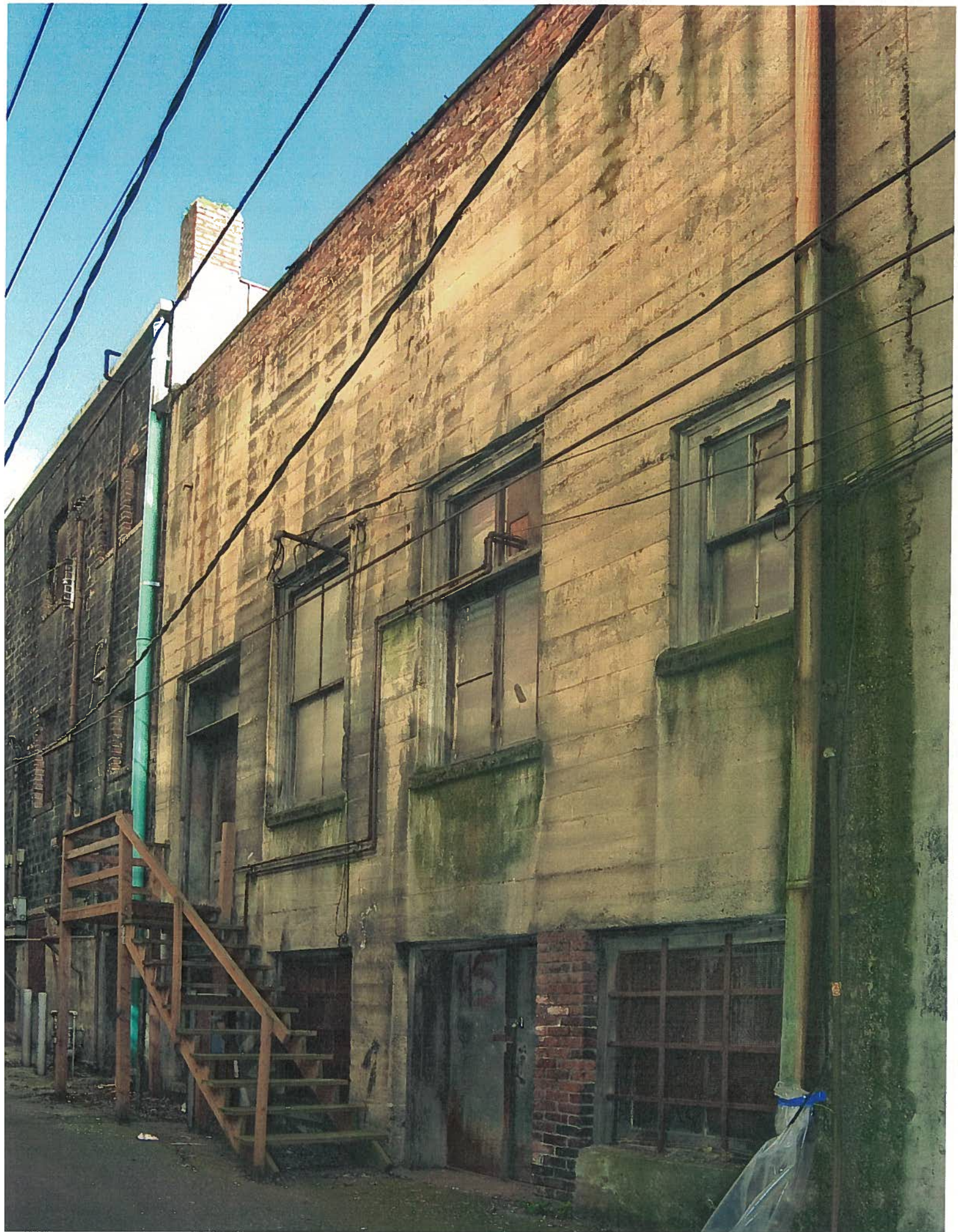


DISTRIBUTION STATEMENT A:
APPROVED FOR PUBLIC
RELEASE; DISTRIBUTION IS
UNLIMITED

DIG05-0525

1-20-05

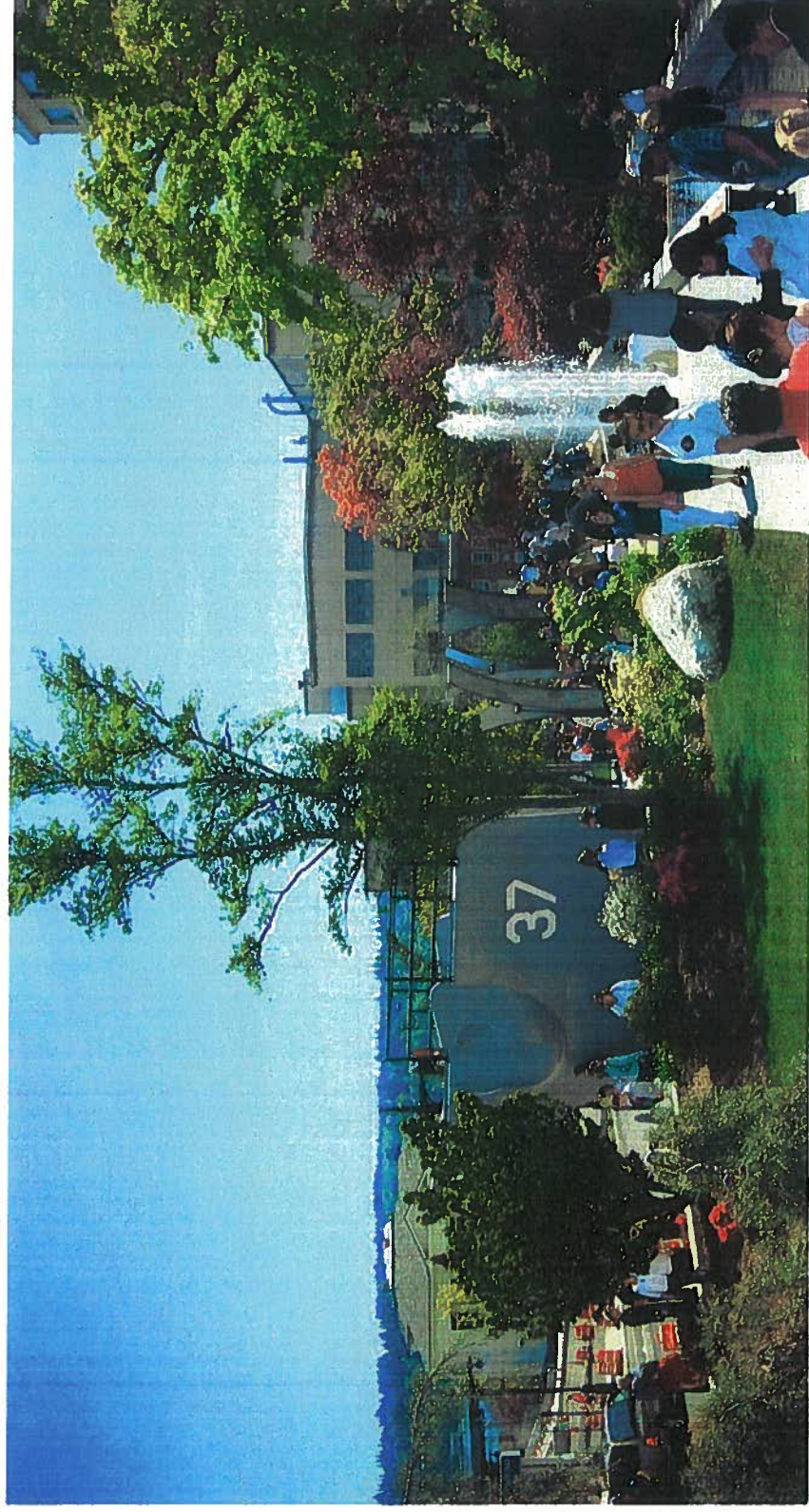






PSNS MEMORIAL PLAZA

After



PSNS MEMORIAL PLAZA

Before

