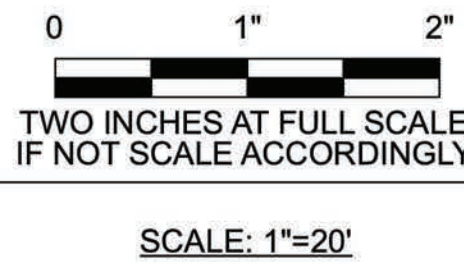


NO.	REVISIONS	DATE	BY
	DESCRIPTION		
1	Bid Set 4/18/24		



FIELD BOOK
DRAWING NO.



CITY OF BREMERTON
DEPARTMENT OF PUBLIC WORKS & UTILITIES
ENGINEERING DIVISION

Emily Russell, P.L.A., A.S.L.A.
2405 4th Street #501
Bremerton WA 98317

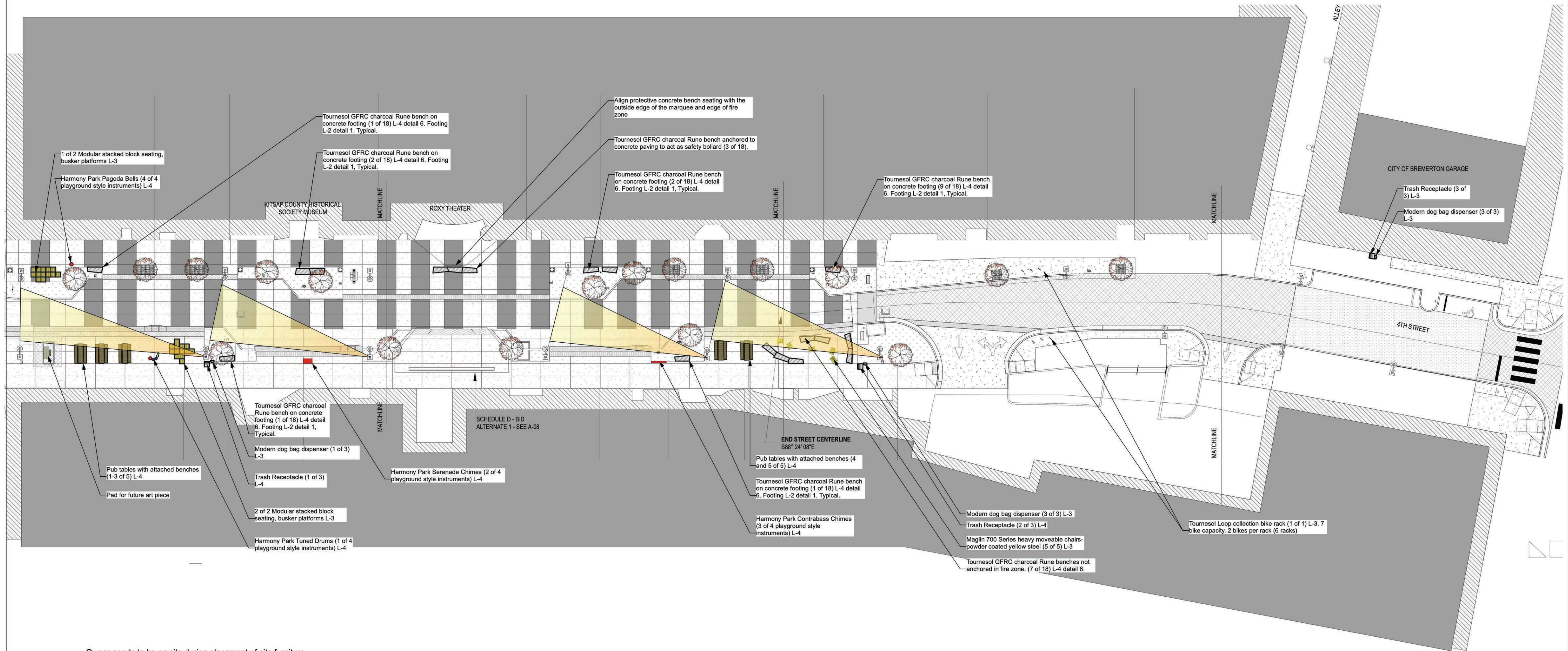


TITLE

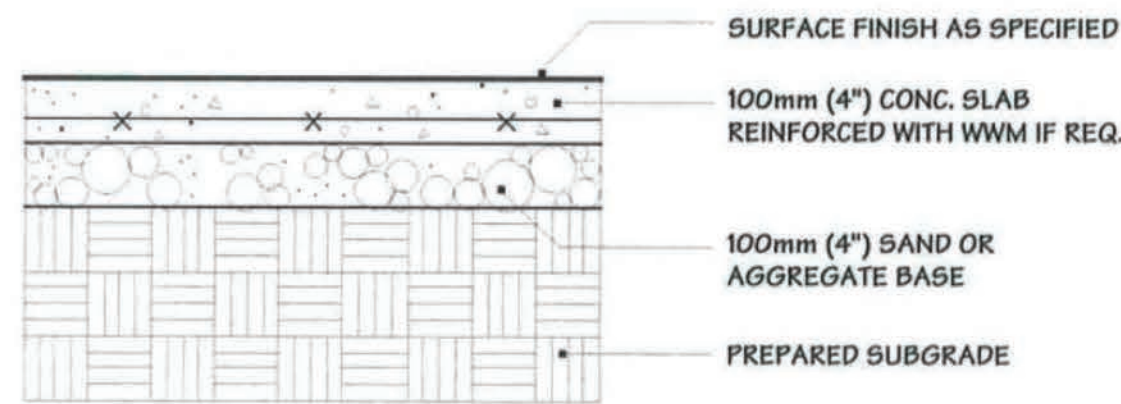
QUINCY SQUARE
SITE PLAN WITH OVERHEAD LAYER

PN: 315012	DWG NO.
	L-1
	SHEET
	53 OF 78

DRAWN BY: ER DATE: REV, 4.18.24	DESIGN BY: EMILY RUSSELL WASH. PLA # 1272 DATE: 4.18.24	CHECKED BY: EMILY RUSSELL WASH. PLA # 1272 DATE: 4.18.24
------------------------------------	--	---



Owner needs to be on site during placement of site furniture for final arrangement and adjustments.



Note:
Concrete footings for benches in planting areas shall match the shape and dimensions of each bench with the outline of the concrete footing flush with the bench perimeter in order to maximize planting areas.

1 Concrete footing for benches located inside planting beds
Scale: Not to Scale



NO.	REVISIONS DESCRIPTION	DATE	BY
1	REVISIONS DESCRIPTION	DATE	BY
2	REVISIONS DESCRIPTION	DATE	BY
3	REVISIONS DESCRIPTION	DATE	BY
4	REVISIONS DESCRIPTION	DATE	BY
5	REVISIONS DESCRIPTION	DATE	BY
6	REVISIONS DESCRIPTION	DATE	BY
7	REVISIONS DESCRIPTION	DATE	BY
8	REVISIONS DESCRIPTION	DATE	BY
9	REVISIONS DESCRIPTION	DATE	BY
10	REVISIONS DESCRIPTION	DATE	BY

0 1" 2"
TWO INCHES AT FULL SCALE
IF NOT SCALE ACCORDINGLY
SCALE: 1"=20'

FIELD BOOK



DRAWING NO.

DRAWN BY: ER
DATE: REV, 4.18.24

CITY OF BREMERTON
DEPARTMENT OF PUBLIC WORKS & UTILITIES
ENGINEERING DIVISION

DESIGN BY: EMILY RUSSELL
WASH. PLA # 1272 DATE: 4.18.24

Emily Russell, P.L.A., A.S.L.A.
245 4th Street #501
Bremerton WA 98517



CHECKED BY: EMILY RUSSELL
WASH. PLA # 1272 DATE: 4.18.24

TITLE

QUINCY SQUARE
SITE PLAN AMENITIES AND MATERIALS LOCATIONS

DWG NO.
L-2
SHEET
54
OF
78
PN: 315012

Diagram illustrating the cube heights for the Northwest corner of the site. The layout shows a grid of cubes with heights in feet (').

6'	1'	18"	18"	2'	
18"	2'	3'	3'	2.5'	2.5'
	2.5'	2.5'	Cube heights for Northwest corner of site		

Diagram illustrating the cube heights for the Southwest corner of the site. The layout shows a grid of cubes with heights in feet (').

	1'				
1'	18"	18"	18"		
2'	2.5'	3'	2.5'	18"	
		18"	2'		
			1'		

Cube heights for Southwest corner of site

1 Maglin Pixel modular stacked seating, viewing, busker platforms. Yellow powder-coated steel with lpe tops (22)

Technical Drawing Details:

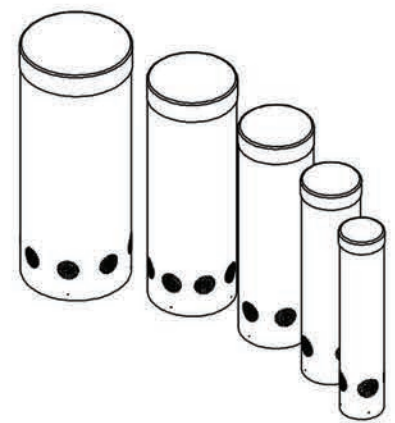
- Embed Mount:** Shows the rack embedded in a concrete base. The base is 20" wide and 12" deep. The rack is 34" high. The mounting plate is 4" x 4" x 1/4". The pipe is 1-1/2" (1.80" O.D.) SCH 40. The hole size for the rebar is 1/2" (1.80" O.D.) SCH 40. The hole size for the anchor bolts is 3/8".
- Surface Mount:** Shows the rack mounted on a surface. The mounting plate is 4" x 4" x 1/4". The pipe is 1-1/2" (1.80" O.D.) SCH 40. The hole size for the anchor bolts is 3/8".
- Material:** The rack shall be fabricated with 1-1/2" sch. 40 steel pipe (1.9" OD). The pipe shall conform to ASTM A53. Bends shall be produced by mandril style rotary drawn bending procedure.
- Protective Coatings:** Following fabrication bike racks shall be cleaned and treated with an iron phosphate process prior to the coating application. This process shall include a non-chromated alkaline cleaner, and an iron phosphate treatment followed with an acidic sealer for maximum adhesion. The protective coatings shall be either polyester or polyester TGIC powder. Following application the parts shall be baked until properly cured. The coating shall be a minimum of 4 mils thick on all surfaces.
- Options for finish:** Corrosion resistant undercoat, strongly recommended.
- Note:** Unless otherwise specified, bike racks shall be powder coated a standard FairWeather color.
- Hot Dip Galvanizing, instead of powder coating:** Following fabrication, the bike rack shall be hot dip galvanized to standard ASTM A123, 3 to 4 mils thick.
- Options:** Mounting: Embed, surface mount.
- Please Note:** For permanent embed, depth and diameter of installation hole may vary with soil conditions. Consult project engineer for correct dimensions.

2 Maglin 700 Series Chairs powder coated yellow steel (5

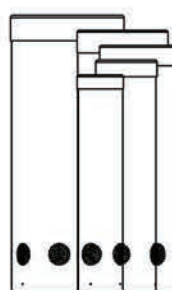
4 Pet Pickups Aluminum Dog Waste (3)



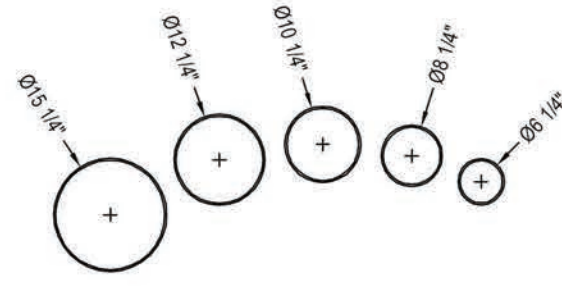
FREENOTES HARMONY PARK
194 BODO DRIVE #F
DURANGO, CO 81303
PHONE: (970) 375-7825
FAX: (970) 247-0856
www.freenotesharmoniypark.com



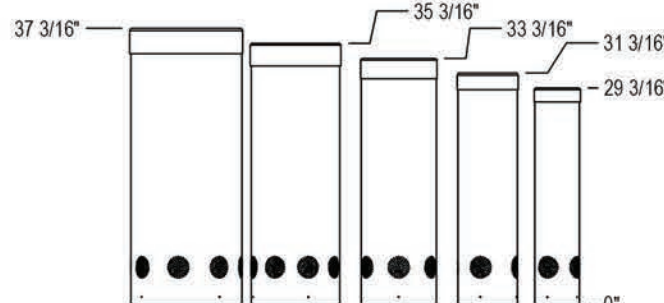
PERSPECTIVE



SIDE ELEVATION



PLAN VIEW



FRONT ELEVATION

- NOTES:
1. REFER TO FREENOTES MAINTENANCE INSTRUCTIONS FOR ALL REQUIRED INSPECTIONS AND/OR REGULARLY SCHEDULED MAINTENANCE.
 2. INSTALLATION TO BE COMPLETED IN ACCORDANCE WITH MANUFACTURER'S SPECIFICATIONS.
 3. ALL DIMENSIONS ARE CONSIDERED TRUE AND REFLECT MANUFACTURER'S SPECIFICATIONS.
 4. DO NOT SCALE DRAWING.
 5. CONTRACTOR'S NOTE: FOR PRODUCT AND COMPANY INFORMATION VISIT www.CADdetails.com/info



DRUMS
TUNED DRUMS



4750-011

PROTECTED BY COPYRIGHT © 2018 CADDETAILS.COM LTD.

REVISION DATE: 12/01/2018

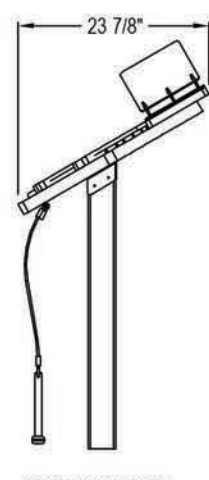
CADdetails.com



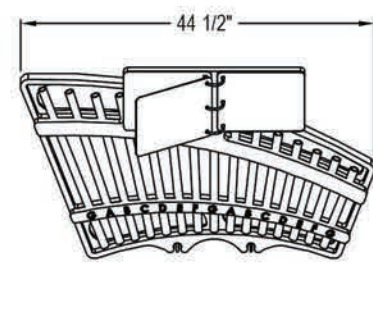
FREENOTES HARMONY PARK
194 BODO DRIVE #F
DURANGO, CO 81303
PHONE: (970) 375-7825
FAX: (970) 247-0856
www.freenotesharmoniypark.com



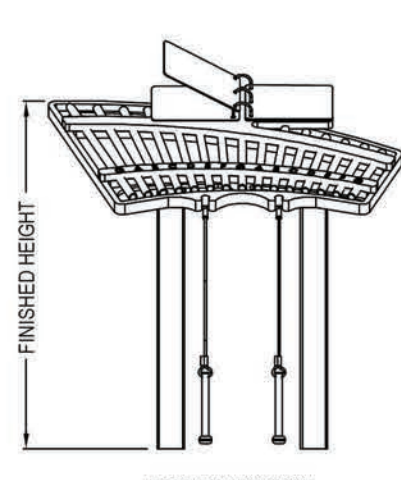
PERSPECTIVE



SIDE ELEVATION



TOP VIEW



FRONT ELEVATION

FINISHED HEIGHT:
AGES 3-5: 30"
AGES 5-7: 35"
AGES 7-11: 40"
ADULT: 44"

- FEATURES:
- C MAJOR DIATONIC
 - RECYCLED HDPE FRAME
 - POWDER COATED ALUMINUM CHIMES

- STAINLESS STEEL HARDWARE
- COLOR COATED SONG BOOK
- BUILT IN MALLET HOLDERS

- NOTES:
1. REFER TO FREENOTES MAINTENANCE INSTRUCTIONS FOR ALL REQUIRED INSPECTIONS AND/OR REGULARLY SCHEDULED MAINTENANCE.
 2. INSTALLATION TO BE COMPLETED IN ACCORDANCE WITH MANUFACTURER'S SPECIFICATIONS.
 3. ALL DIMENSIONS ARE CONSIDERED TRUE AND REFLECT MANUFACTURER'S SPECIFICATIONS.
 4. DO NOT SCALE DRAWING.
 5. CONTRACTOR'S NOTE: FOR PRODUCT AND COMPANY INFORMATION VISIT www.CADdetails.com/info



CHIMES
SERENADE



4750-028

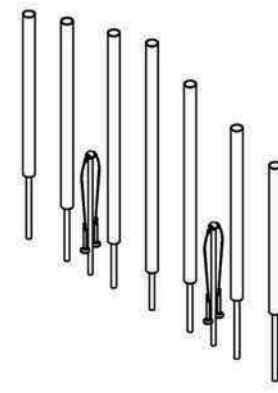
PROTECTED BY COPYRIGHT © 2017 CADDETAILS.COM LTD.

REVISION DATE: 22/12/2017

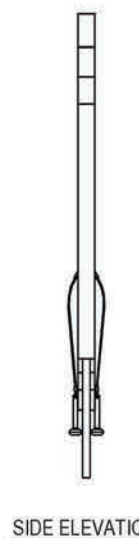
CADdetails.com



FREENOTES HARMONY PARK
194 BODO DRIVE #F
DURANGO, CO 81303
PHONE: (970) 375-7825
FAX: (970) 247-0856
www.freenotesharmoniypark.com



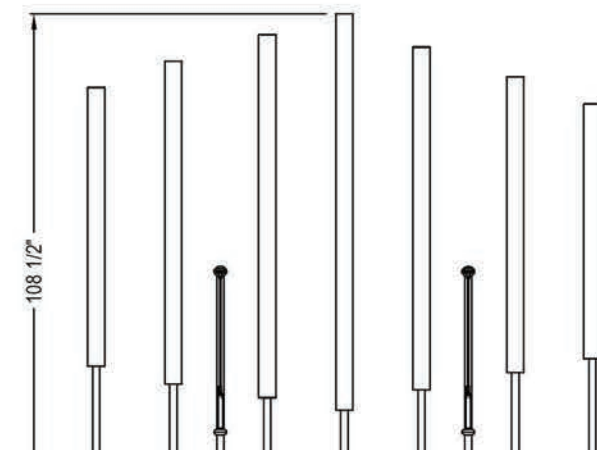
ISOMETRIC



SIDE ELEVATION



PLAN VIEW



FRONT ELEVATION

- NOTES:
1. REFER TO FREENOTES MAINTENANCE INSTRUCTIONS FOR ALL REQUIRED INSPECTIONS AND/OR REGULARLY SCHEDULED MAINTENANCE.
 2. INSTALLATION TO BE COMPLETED IN ACCORDANCE WITH MANUFACTURER'S SPECIFICATIONS.
 3. ALL DIMENSIONS ARE CONSIDERED TRUE AND REFLECT MANUFACTURER'S SPECIFICATIONS.
 4. DO NOT SCALE DRAWING.
 5. CONTRACTOR'S NOTE: FOR PRODUCT AND COMPANY INFORMATION VISIT www.CADdetails.com/info



CHIMES
CONTRABASS CHIMES



4750-001

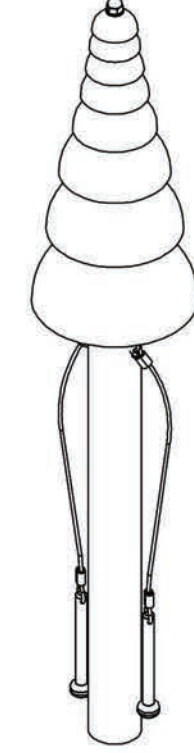
PROTECTED BY COPYRIGHT © 2017 CADDETAILS.COM LTD.

REVISION DATE: 18/12/2017

CADdetails.com



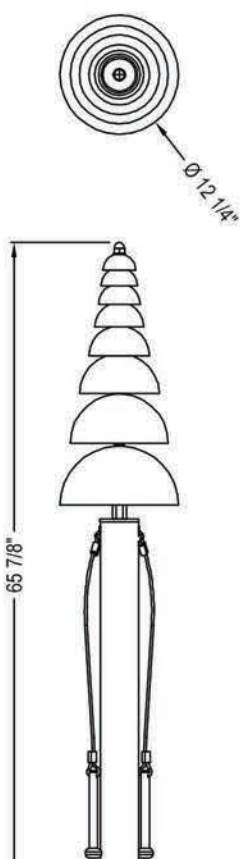
FREENOTES HARMONY PARK
194 BODO DRIVE #F
DURANGO, CO 81303
PHONE: (970) 375-7825
FAX: (970) 247-0856
www.freenotesharmoniypark.com



ISOMETRIC



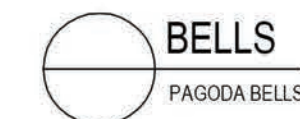
SIDE ELEVATION



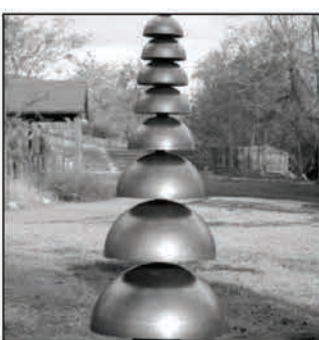
FRONT ELEVATION

- FEATURES:
- STAINLESS STEEL BELLS
 - STAINLESS STEEL HARDWARE

- NOTES:
1. REFER TO FREENOTES MAINTENANCE INSTRUCTIONS FOR ALL REQUIRED INSPECTIONS AND/OR REGULARLY SCHEDULED MAINTENANCE.
 2. INSTALLATION TO BE COMPLETED IN ACCORDANCE WITH MANUFACTURER'S SPECIFICATIONS.
 3. ALL DIMENSIONS ARE CONSIDERED TRUE AND REFLECT MANUFACTURER'S SPECIFICATIONS.
 4. DO NOT SCALE DRAWING.
 5. CONTRACTOR'S NOTE: FOR PRODUCT AND COMPANY INFORMATION VISIT www.CADdetails.com/info



BELLS
PAGODA BELLS



4750-005

PROTECTED BY COPYRIGHT © 2017 CADDETAILS.COM LTD.

REVISION DATE: 18/12/2017

CADdetails.com

1 Harmony Park Tuned Drums

2 Harmony Park Serenade Chimes

3 Harmony Park Contrabass Chimes

4 Harmony Park Pagoda Bells

High Capacity Station (HCS)

Bigbelly's HCS is a smart, solar-powered, compacting waste or recycling station. This compacting model holds 5x more than the average 30-gallon traditional waste bin and is equipped with sensors that monitor and report fullness levels and collection activity. It harvests solar power to compact waste and communicate its real-time status. The HCS's enclosed hopper (opening) design ensures total waste containment. This model maintains the durable, high quality and design integrity of all Bigbelly smart stations, and can be customized based on waste stream, options, and accessories.



BUILT-IN
COMPACTOR



SOLAR
POWERED



SMART
STATION



FULLNESS
SENSING

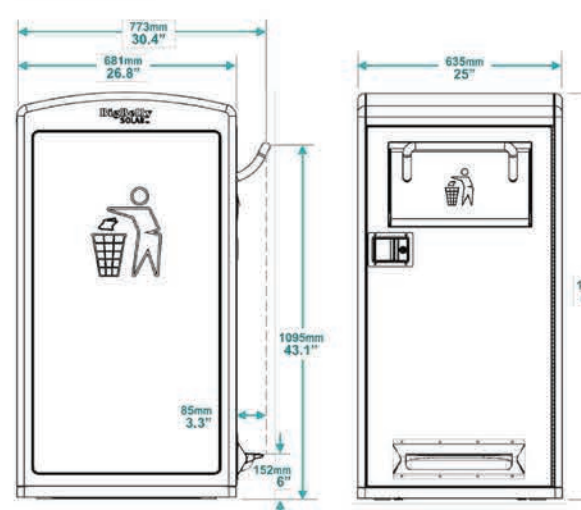


ONBOARD
GPS



CELLULAR
CONNECTION

Technical Specifications



Overall Machine Dimensions

- Height: 49.8" (1264 mm)
- Width: 25" (635 mm)
- Depth: 26.8" (681 mm)
- Handle Height (ADA Compliant): 43.1" (1095 mm)
- Weight: 270 lbs (122 kg)
- Shipping weight: 300 lbs (136.08 kg)
- Hopper Opening: 6" x 17" (152 mm x 432 mm)
- Bin Volume: 33 gallons (125 L) compacted trash; approx. 150 gallons (568 L) uncompacted trash.
- Bin Dimension: 24" x 20.4" x 21.65" (609 mm x 518 mm x 549 mm)

Waste Streams: Mixed Waste Trash, Single Stream Recycling, or Compost (with appropriate markings).

Options: Diagram to left shown with Foot Pedal. See options and accessories on next page.

High Capacity Station (HCS)

Smart, Solar-Powered,
Compacting Model
(150 Gal. / 570 L)

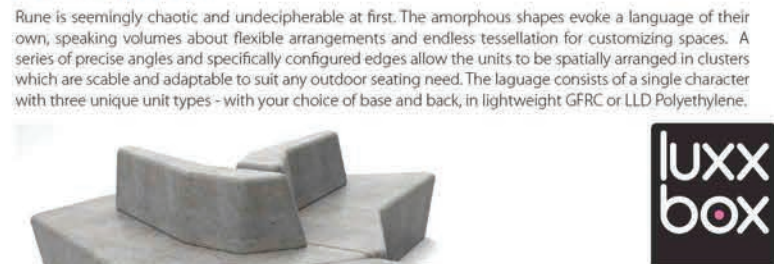


Bigbelly

www.bigbelly.com | info@bigbelly.com
1-719-464-6002 | © 2018 Bigbelly Inc.

Rune Bench

Designed by Jason Bird in 2013



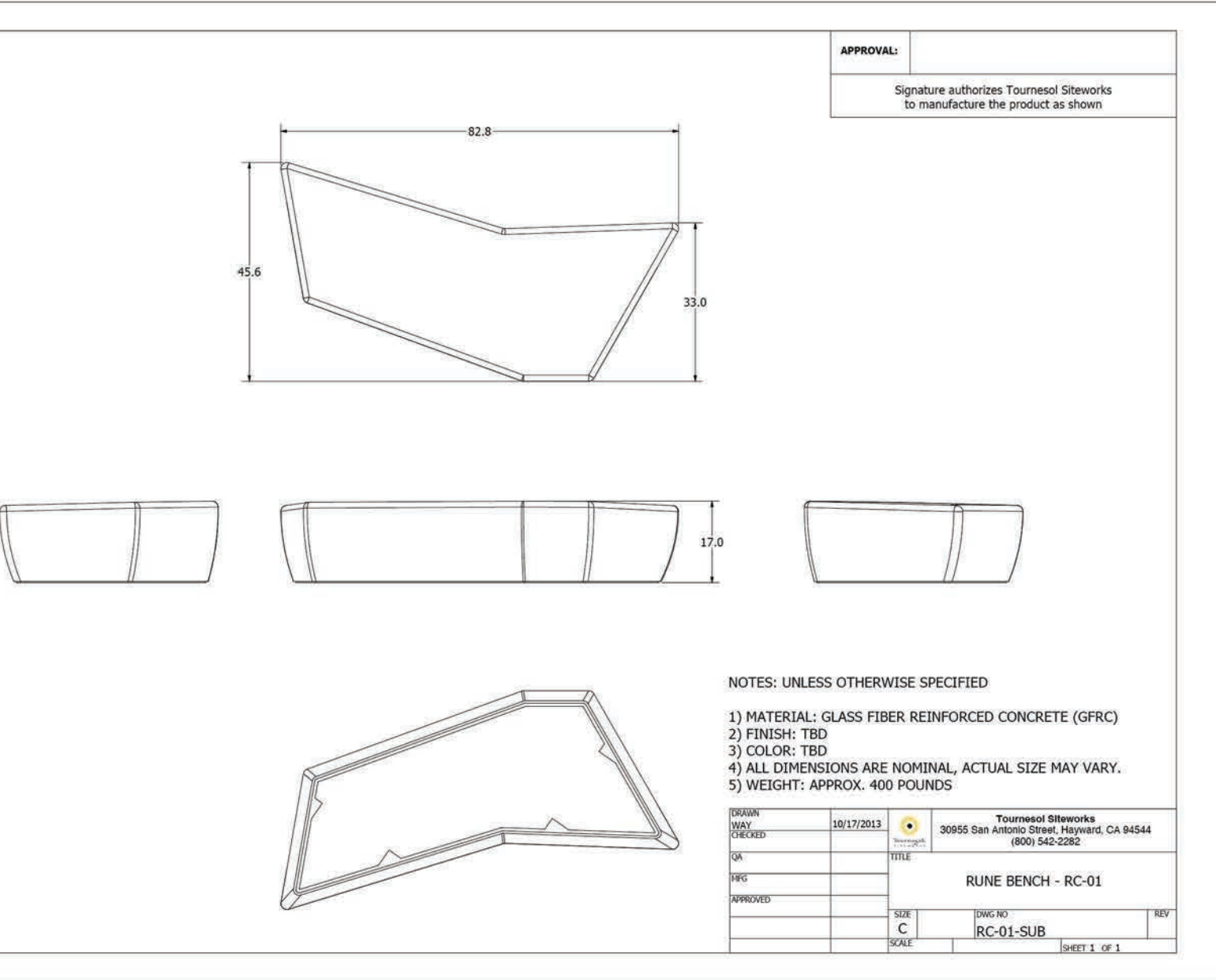
- Asymmetric modular design combines for a variety of configurations
- Available in three different configurations, with or without back
- Durable GFRP holds up to heavy abuse
- Back may be finished in alternate colors
- Lightweight LLD Polyethylene unit may be internally lit



For more information about the Rune Bench, visit toursol.com/products/rune-bench.html

Toursol SITEWORKS 800.542.2282

RC-01
Toursol Siteworks



APPROVAL:

Signature authorizes Toursol Siteworks
to manufacture the product as shown

NOTES: UNLESS OTHERWISE SPECIFIED

- 1) MATERIAL: GLASS FIBER REINFORCED CONCRETE (GFRP)
- 2) FINISH: TSD
- 3) COLOR: TSD
- 4) ALL DIMENSIONS ARE NOMINAL. ACTUAL SIZE MAY VARY.
- 5) WEIGHT: APPROX. 400 POUNDS

DATE	10/17/2013	PROJECT	Toursol Siteworks
BY	EM	LOCATION	20855 5th Avenue Street, Hayward, CA 94544
QA		PHONE	(925) 542-2282
REV		NAME	RUNE BENCH - RC-01
APPROVED		DATE	10/17/2013
BY	EM	SCALE	RC-01-SUB
PROJECT	C	SHEET	1 OF 1

5 Big Belly garbage with wrap art to be determined (3)

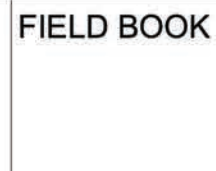
6 Toursol Rune R-01 Bench- (18) GFRP, all in charcoal color

7 Seaside Casual Furniture in SSC black Envirowood (5)



NO	REVISIONS	DESCRIPTION	DATE	BY
		Bid Set 4/18/24		

SCALE: NTS



DRAWING NO.



DRAWN BY: ER
DATE: REV. 4.18.24

CITY OF BREMERTON
DEPARTMENT OF PUBLIC WORKS & UTILITIES
ENGINEERING DIVISION

DESIGN BY: EMILY RUSSELL
WASH. PLA # 1272 DATE: 4.18.24

Emily Russell, P.L.A., A.S.L.A.
602-960-1726
www.em-russell.com
245 4th Street #201
Bremerton WA 98317



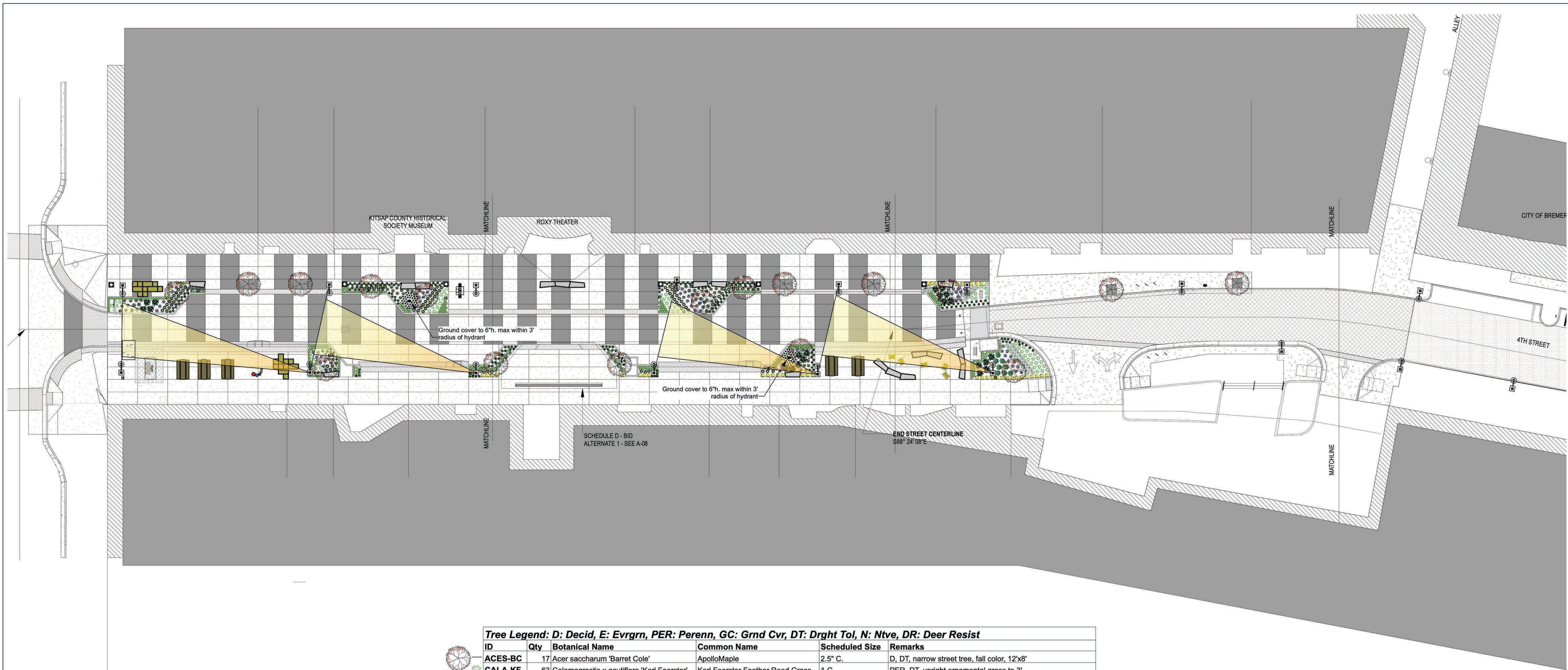
CHECKED BY: EMILY RUSSELL
WASH. PLA # 1272 DATE: 4.18.24

TITLE

QUINCY SQUARE
SCULPTURE LEGEND

PN: 315012

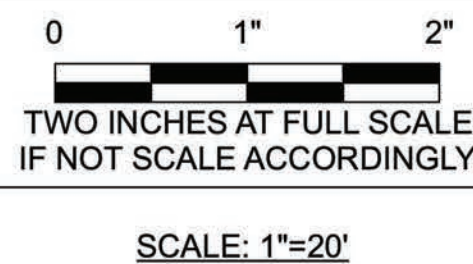
DWG NO.
L-4
SHEET
56
OF
78



Tree Legend: D: Decid, E: Evgrn, PER: Perenn, GC: Grnd Cvr, DT: Drght Tol, N: Ntve, DR: Deer Resist					
ID	Qty	Botanical Name	Common Name	Scheduled Size	Remarks
ACES-BC	17	Acer saccharum 'Barret Cole'	ApolloMaple	2.5" C.	D, DT, narrow street tree, fall color, 12'x8'
CALA-KF	63	Calamagrostis x acutiflora 'Karl Foerster'	Karl Foerster Feather Reed Grass	1 G.	PER, DT, upright ornamental grass to 3'
ECH-RS	3	Echinacea purpurea 'Ruby Star'	Ruby Star Coneflower	1 G.	PER, DT, Purple daisy flowers, attracts butterflies
ECHI-M	12	Echinacea 'Magnus'	Magnus Echinacea	1 G.	PER, DT, rosy colored daisy flowers, attracts butterflies
EUPC-HD	96	Euphorbia characias 'Humpty Dumpty'	Dwarf Mediterranean Spurge	1 G.	E, DR, green foliage, yellow flowers
MAHA-C	39	Mahonia aquifolium 'Compacta'	Compact Oregon Grape Holly	1 G.	E, DT, N, DR, low shrub, yellow fragrant flower
NEPR-WL	34	Nepeta racemosa 'Walker's Low'	Walker's Low Catmint	1 G.	PER, DT, fragrant, low shrub, purple flower stalks
OPHJ	193	Ophiopogon japonicus	Mondo Grass	1 G.	E, low ornamental grass, green foliage
OPHJ-N	74	Ophiopogon japonicus 'Nana'	Dwarf Mondo Grass	1 G.	E, dwarf ornamental grass
PENA-LB	280	Pennisetum alopecuroides 'Little Bunny'	Dwarf Fountain Grass	1 G.	PER, DT, low ornamental grass
PERA	61	Perovskia atriplicifolia	Russian Sage	1 G.	PER, DT, DR, low shrub, tough, airy, fragrant, purple flowers
ROS	27	Rosemarinus officinalis	Upright Rosemary	1 G.	E, DT, edible, fragrant shrub
RUD-H	41	Rudbeckia 'Herbstsonne'	Black-Eyed Susan	1 G.	PER, DR, DT, yellow daisy flowers, attracts butterflies
SARH-H	8	Sarcococca hookeriana 'Humulis'	Dwarf Sweet box	1 G.	E, DT, DR, low shrub, green foliage, fragrant in winter
SARR	10	Sarcococca ruscifolia	Sweetbox	1 G.	E, DT, DR, upright shrub, green foliage, fragrant in winter
VIBD	21	Viburnum davidii	David Viburnum	5 G.	E, medium shrub, hardy, year round interest



NO	REVISIONS DESCRIPTION	DATE	BY
	Bid Set 4/18/24		



FIELD BOOK



DRAWING NO.

DRAWN BY: ER
DATE: REV, 4.18.24

CITY OF BREMERTON
DEPARTMENT OF PUBLIC WORKS & UTILITIES
ENGINEERING DIVISION

DESIGN BY: EMILY RUSSELL
WASH. PLA # 1272 DATE: 4.18.24

Emily Russell, P.L.A., A.S.L.A.
360 West 172nd
Seattle, WA 98147
206-461-1044
emirrussell@aol.com

245 4th Street #501
Bremerton WA 98317

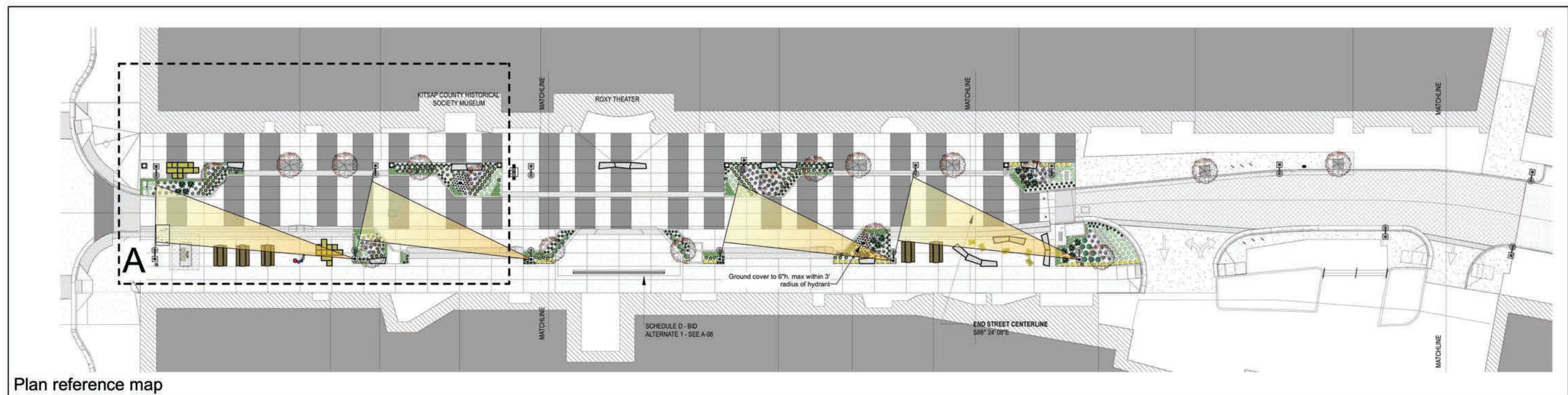
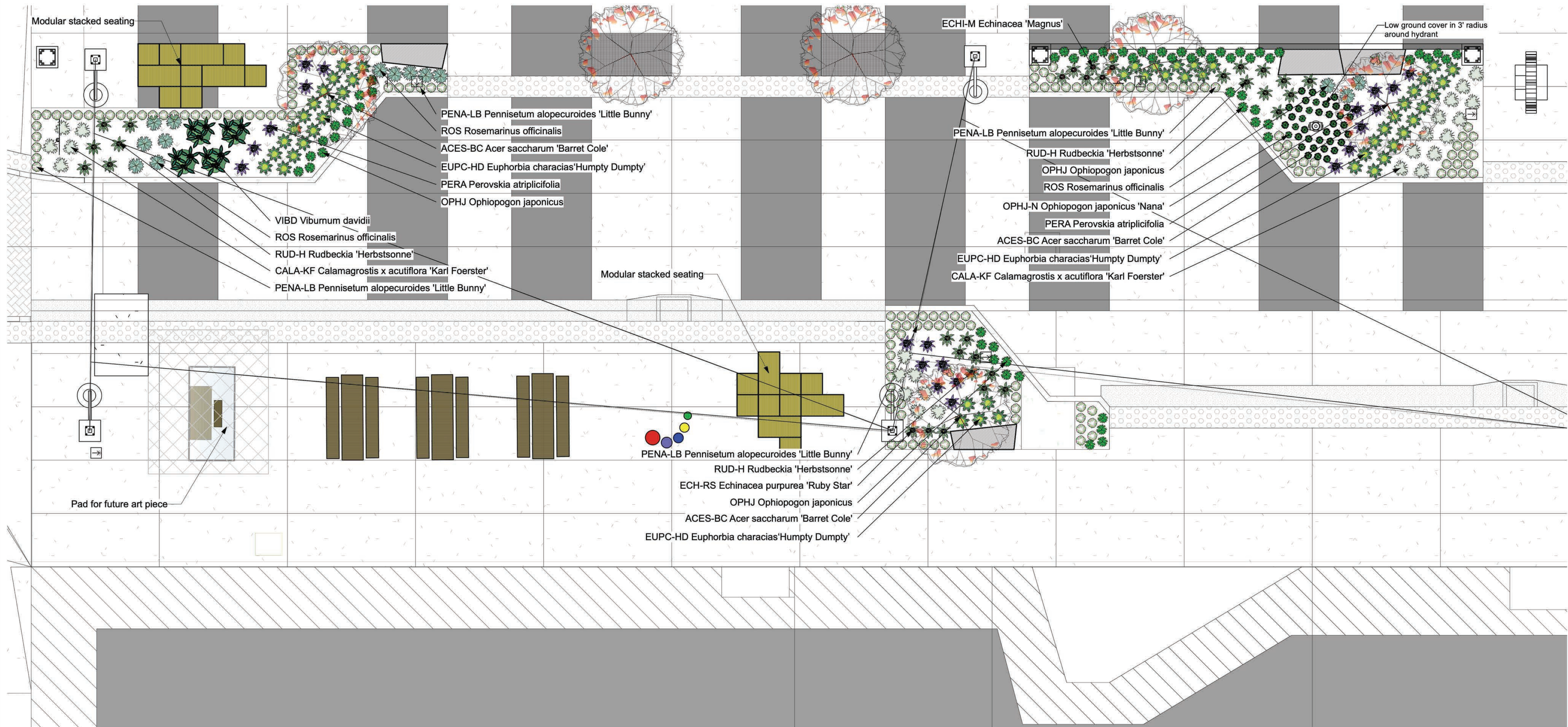
ERLA
From The Ground Up

CHECKED BY: EMILY RUSSELL
WASH. PLA # 1272 DATE: 4.18.24

TITLE

QUINCY SQUARE
SITE PLANTING PLAN

DWG NO.
L-5
SHEET
57
OF
78
PN: 315012



NO.	REVISIONS DESCRIPTION	DATE	BY
1	Bid Set 4/18/24		
2			
3			
4			

0 1" 2"
TWO INCHES AT FULL SCALE
IF NOT SCALE ACCORDINGLY
SCALE: 3/16"=1'

FIELD BOOK



DRAWING NO.

DRAWN BY: ER
DATE: REV. 4.18.24

CITY OF BREMERTON
DEPARTMENT OF PUBLIC WORKS & UTILITIES
ENGINEERING DIVISION

DESIGN BY: EMILY RUSSELL
WASH. PLA # 1272 DATE: 4.18.24

Emily Russell, P.L.A., A.S.L.A.
245 4th Street #501
Bremerton WA 98317

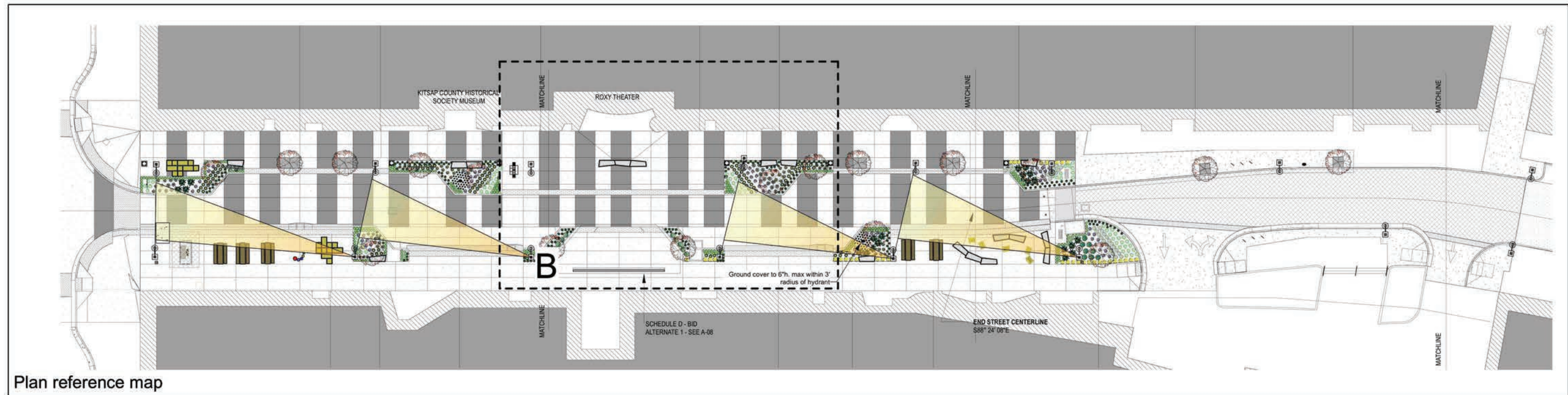
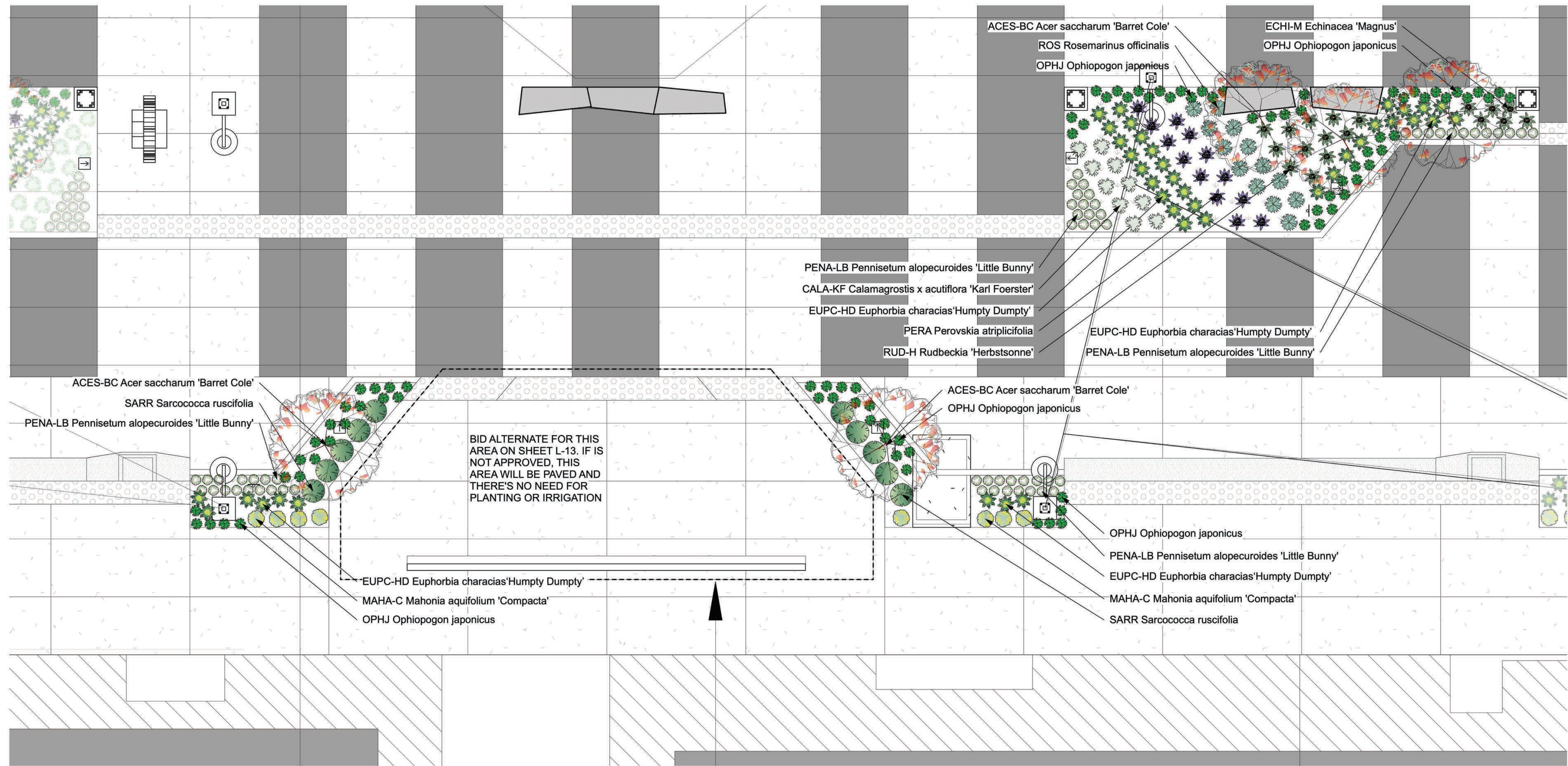


TITLE

QUINCY SQUARE
PLANTING PLAN FOR GREEN ROOM AND BACK STAGE

PN: 315012

DWG NO.
L-6
SHEET
58
OF
78



Plan reference map



NO	REVISIONS	DATE	BY
	DESCRIPTION		
1	Bid Set 4/18/24		

0 1" 2"
TWO INCHES AT FULL SCALE
IF NOT SCALE ACCORDINGLY
SCALE: 3/16"=1'

FIELD BOOK



DRAWING NO.

DRAWN BY: ER
DATE: REV, 4.18.24

CITY OF BREMERTON
DEPARTMENT OF PUBLIC WORKS & UTILITIES
ENGINEERING DIVISION

DESIGN BY: EMILY RUSSELL
WASH. PLA # 1272 DATE: 4.18.24

CHECKED BY: EMILY RUSSELL
WASH. PLA # 1272 DATE: 4.18.24

Emily Russell, P.L.A., A.S.A.
300 West 12th
Bremerton, WA 98311
206.835.1234
emily@erla.com



TITLE

QUINCY SQUARE
PLANTING PLAN FOR MAIN STAGE

PN: 315012

DWG NO.
L-7
SHEET
59
OF
78

