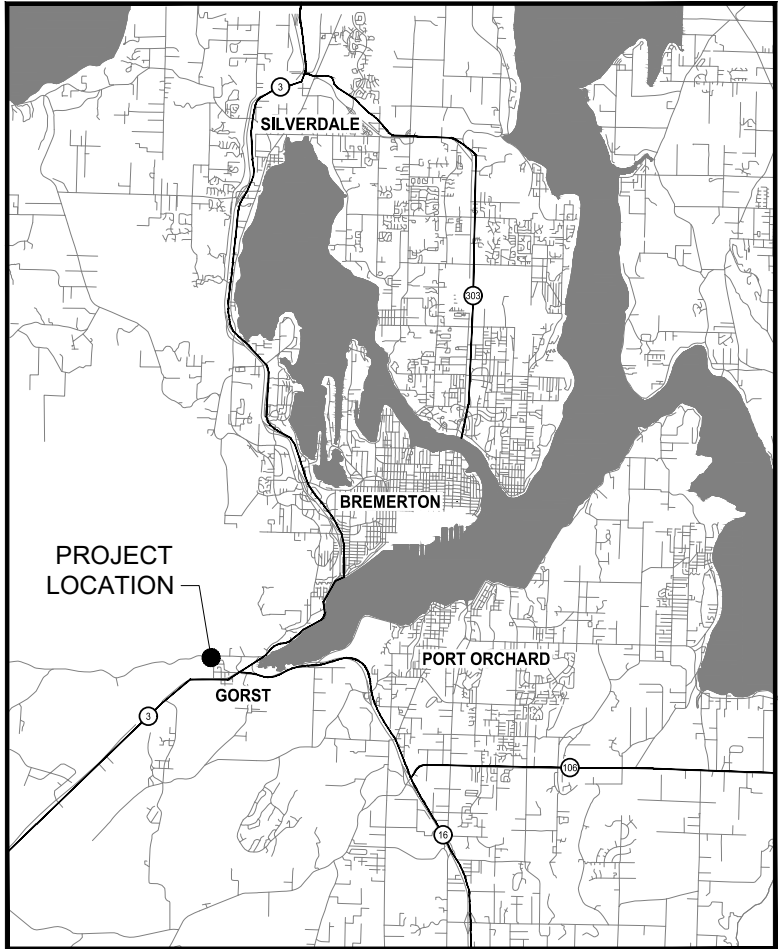


PARISH CREEK FISH PASSAGE BARRIER REMOVAL

PROJECT #882
JANUARY 2024



LOCATION MAP
NO SCALE

DRAWING INDEX		
SHEET	DWG	SHEET TITLE
GENERAL 1 2 3	G1	COVER SHEET
	G2	GENERAL NOTES, LEGEND AND ABBREVIATIONS *
	G3	HORIZONTAL CONTROL AND EXISTING CONDITIONS
SITE PREPARATION 4 5	DM1	DEMOLITION, TESC AND CREEK DIVERSION PLAN *
	DM2	DEMOLITION, TESC AND CREEK DIVERSION DETAILS *
CIVIL 6 7 8 9 10	C1	ROADWAY PLAN AND PROFILE
	C2	CREEK PLAN AND PROFILE
	C3	CREEK LONG PROFILE
	C4	ROADWAY DETAILS
	C5	CREEK DETAILS
LANDSCAPING 11 12	LS1	LANDSCAPE PLAN AND PLANTING SCHEDULE *
	LS2	LANDSCAPE DETAILS *
TRAFFIC CONTROL 13	TC1	TEMPORARY TRAFFIC CONTROL PLAN *
STRUCTURAL 14-XX	S1-	STRUCTURAL PLANS AND DETAILS *

* TO BE PROVIDED DURING FINAL DESIGN



30% DESIGN - NOT FOR CONSTRUCTION



NO.	REVISIONS	DATE	BY

CITY OF BREMERTON DEPARTMENT OF PUBLIC WORKS & UTILITIES ENGINEERING DIVISION		
DESIGN BY: D. DINKUHN WA P.E.# 35814 DATE: 1/2024	DRAWN BY: M. BIGGS DATE: 1/2024	CHECKED BY: G. FRIDRIKSSON WA P.E.# 43786 DATE: 1/18/24

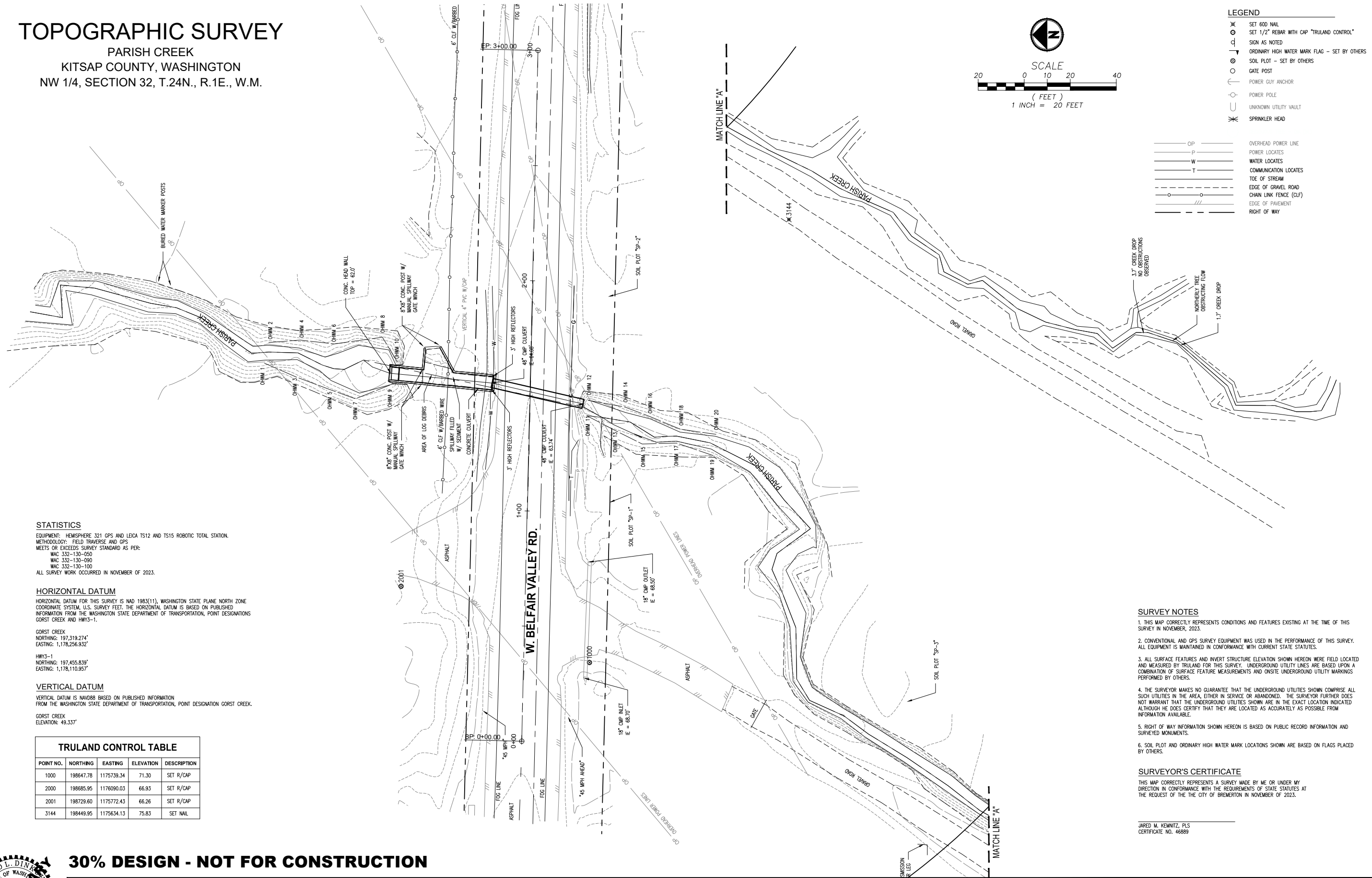
SECTION, TOWNSHIP, RANGE: S32, T24N, R1E, W.M.
GRANT/LOAN INFORMATION

PARISH CREEK FISH PASSAGE BARRIER REMOVAL COVER SHEET	SHEET 1 OF 13
	PN: 882
	DWG G-1



Know what's below.
Call before you dig.
Determina lo que esta bajo tierra.
Llama antes de excavar.

TOPOGRAPHIC SURVEY
PARISH CREEK
KITSAP COUNTY, WASHINGTON
NW 1/4, SECTION 32, T.24N., R.1E., W.M.



STATISTICS

EQUIPMENT: HEMISPHERE 321 GPS AND LEICA TS12 AND TS15 ROBOTIC TOTAL STATION.
METHODOLOGY: FIELD TRAVERSE AND GPS
MEETS OR EXCEEDS SURVEY STANDARD AS PER:
WAC 332-130-050
WAC 332-130-090
WAC 332-130-100
ALL SURVEY WORK OCCURRED IN NOVEMBER OF 2023.

HORIZONTAL DATUM

HORIZONTAL DATUM FOR THIS SURVEY IS NAD 1983(11), WASHINGTON STATE PLANE NORTH ZONE COORDINATE SYSTEM, U.S. SURVEY FEET. THE HORIZONTAL DATUM IS BASED ON PUBLISHED INFORMATION FROM THE WASHINGTON STATE DEPARTMENT OF TRANSPORTATION, POINT DESIGNATIONS GORST CREEK AND HWY3-1.

GORST CREEK

NORTHING: 197,319.274'

EASTING: 1,178,256.932'

HWY3-1

NORTHING: 197,455.839'

EASTING: 1,178,110.957'

VERTICAL DATUM

VERTICAL DATUM IS NAVD88 BASED ON PUBLISHED INFORMATION FROM THE WASHINGTON STATE DEPARTMENT OF TRANSPORTATION, POINT DESIGNATION GORST CREEK.

GORST CREEK
ELEVATION: 49.337'

TRULAND CONTROL TABLE				
POINT NO.	NORTHING	EASTING	ELEVATION	DESCRIPTION
1000	198647.78	1175739.34	71.30	SET R/CAP
2000	198685.95	1176090.03	66.93	SET R/CAP
2001	198729.60	1175772.43	66.26	SET R/CAP
3144	198449.95	1175634.13	75.83	SET NAIL

SURVEY NOTES

1. THIS MAP CORRECTLY REPRESENTS CONDITIONS AND FEATURES EXISTING AT THE TIME OF THIS SURVEY IN NOVEMBER, 2023.
2. CONVENTIONAL AND GPS SURVEY EQUIPMENT WAS USED IN THE PERFORMANCE OF THIS SURVEY. ALL EQUIPMENT IS MAINTAINED IN CONFORMANCE WITH CURRENT STATE STATUTES.
3. ALL SURFACE FEATURES AND INVERT STRUCTURE ELEVATION SHOWN HEREON WERE FIELD LOCATED AND MEASURED BY TRULAND FOR THIS SURVEY. UNDERGROUND UTILITY LINES ARE BASED UPON A COMBINATION OF SURFACE FEATURE MEASUREMENTS AND ON-SITE UNDERGROUND UTILITY MARKINGS PERFORMED BY OTHERS.
4. THE SURVEYOR MAKES NO GUARANTEE THAT THE UNDERGROUND UTILITIES SHOWN COMPRISE ALL SUCH UTILITIES IN THE AREA, EITHER IN SERVICE OR ABANDONED. THE SURVEYOR FURTHER DOES NOT WARRANT THAT THE UNDERGROUND UTILITIES SHOWN ARE IN THE EXACT LOCATION INDICATED ALTHOUGH HE DOES CERTIFY THAT THEY ARE LOCATED AS ACCURATELY AS POSSIBLE FROM INFORMATION AVAILABLE.
5. RIGHT OF WAY INFORMATION SHOWN HEREON IS BASED ON PUBLIC RECORD INFORMATION AND SURVEYED MONUMENTS.
6. SOIL PLOT AND ORDINARY HIGH WATER MARK LOCATIONS SHOWN ARE BASED ON FLAGS PLACED BY OTHERS.

SURVEYOR'S CERTIFICATE

THIS MAP CORRECTLY REPRESENTS A SURVEY MADE BY ME OR UNDER MY DIRECTION IN CONFORMANCE WITH THE REQUIREMENTS OF STATE STATUTES AT THE REQUEST OF THE CITY OF BREMERTON IN NOVEMBER OF 2023.

JARED M. KEMNITZ, PLS
CERTIFICATE NO. 46889



30% DESIGN - NOT FOR CONSTRUCTION

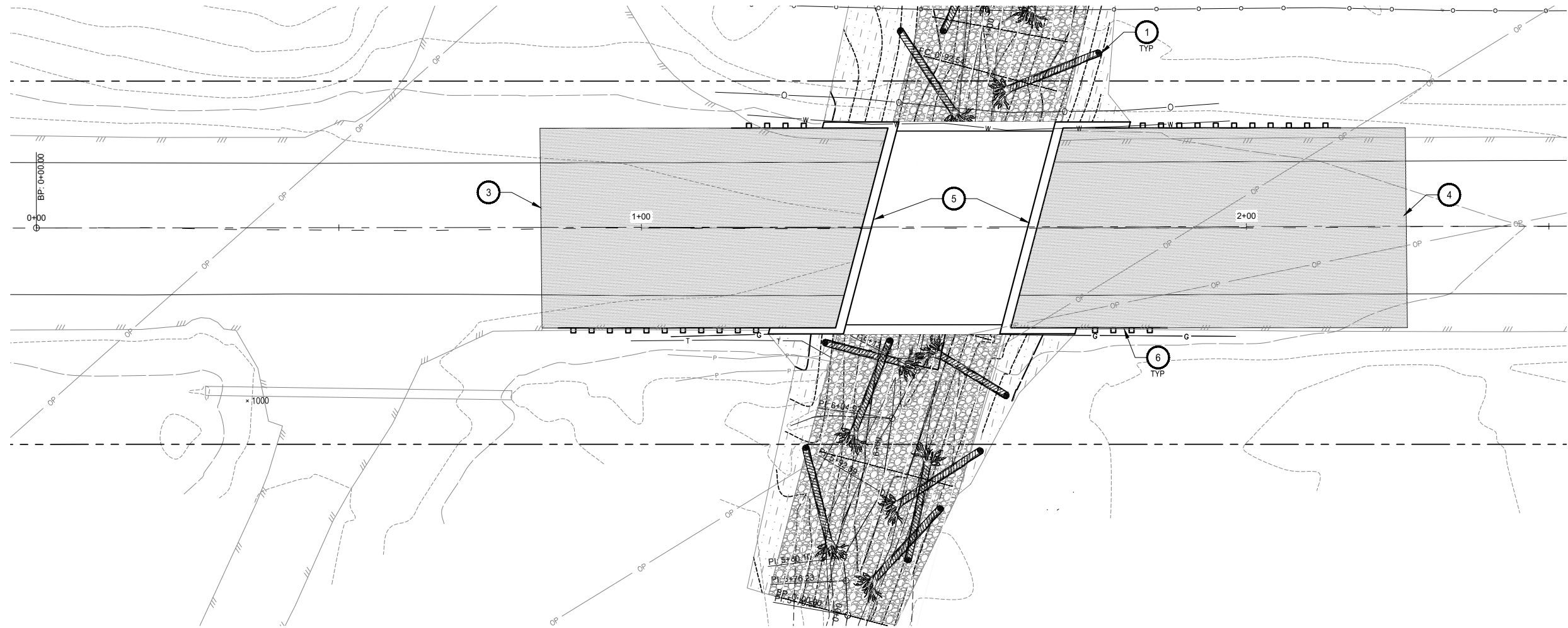


NO.	REVISIONS	DATE	BY

CITY OF BREMERTON DEPARTMENT OF PUBLIC WORKS & UTILITIES ENGINEERING DIVISION			
DESIGN BY: D. DINKUHN WA P.E.# 35814 DATE: 1/2024	DRAWN BY: M. BIGGS DATE: 1/2024	CHECKED BY: G. FRIDRIKSSON WA P.E.# 43786 DATE: 1/18/24	SECTION, TOWNSHIP, RANGE: S32, T24N, R1E, W.M. GRANT/LOAN INFORMATION

PARISH CREEK FISH PASSAGE BARRIER REMOVAL
HORIZONTAL CONTROL AND EXISTING CONDITIONS

SHEET 3 OF 13
PN: 882
DWG G-3

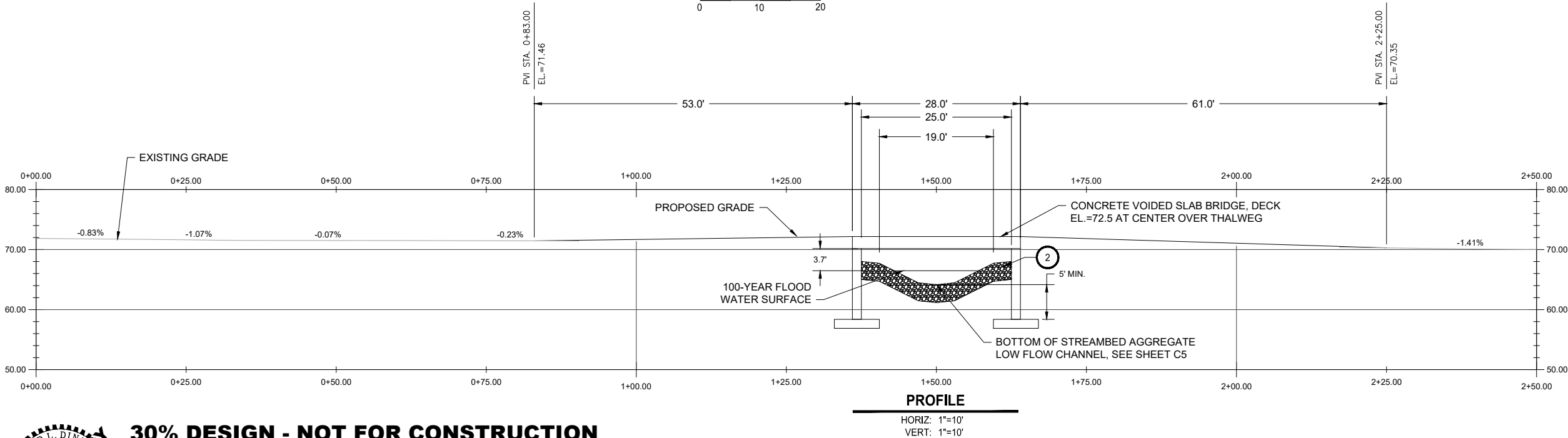
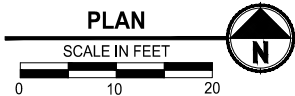


KEYNOTES:

- 1 LARGE WOODY MATERIAL (LWM), SEE DETAIL 1 D2
- 2 3' STREAMBED AGGREGATE, SEE DETAIL 2 D2
- 3 BEGIN NEW HMA, MATCH EXISTING
- 4 END NEW HMA, MATCH EXISTING
- 5 BRIDGE ABUTMENT, SEE STRUCTURAL SHEETS
- 6 BEAM GUARDRAIL TYPE 31 PER WSDOT STD PLAN C-20-10-7.

LEGEND

- HMA CL 1/2 IN PG 584-22
- STREAMBED AGGREGATE
- LANDSCAPING, SEE LS SHEETS
- FLOW LINE
- GUARD RAIL
- CHAIN LINK FENCE
- ROW BOUNDARY
- LARGE WOODY MATERIAL



30% DESIGN - NOT FOR CONSTRUCTION



NO.	REVISIONS	DATE	BY

CITY OF BREMERTON
DEPARTMENT OF PUBLIC WORKS & UTILITIES
ENGINEERING DIVISION

DESIGN BY: D. DINKUHN
WA P.E.# 35814 DATE: 1/2024

DRAWN BY: M. BIGGS
DATE: 1/2024

CHECKED BY: G. FRIDRIKSSON
WA P.E.# 43786 DATE: 1/2024

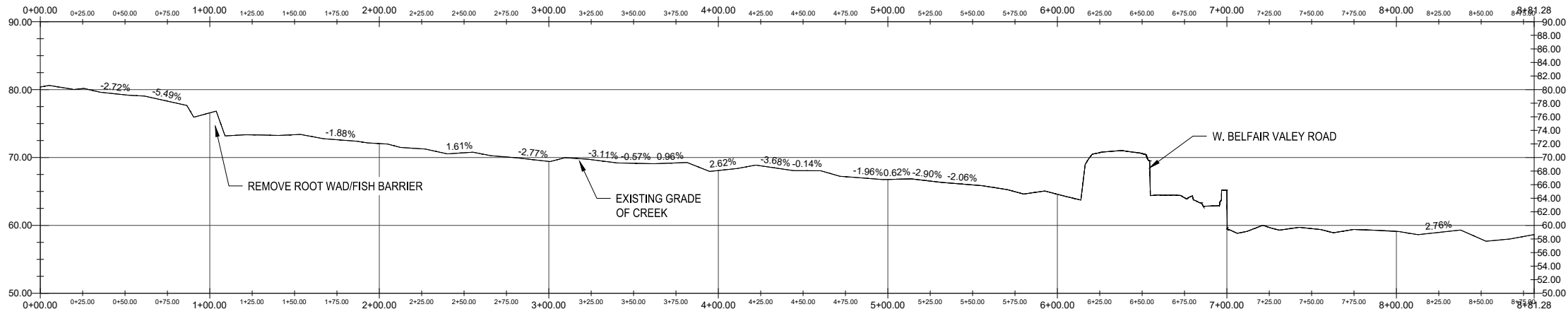
SECTION, TOWNSHIP, RANGE: S32, T24N, R1E, W.M.
GRANT/LOAN INFORMATION

PARISH CREEK FISH PASSAGE BARRIER REMOVAL
ROADWAY PLAN AND PROFILE

SHEET
6 OF 13

PN: 882

DWG
C-1



PROFILE
HORIZ: 1"=40'
VERT: 1"=10'



30% DESIGN - NOT FOR CONSTRUCTION



NO.	REVISIONS	DATE	BY

CITY OF BREMERTON
DEPARTMENT OF PUBLIC WORKS & UTILITIES
ENGINEERING DIVISION

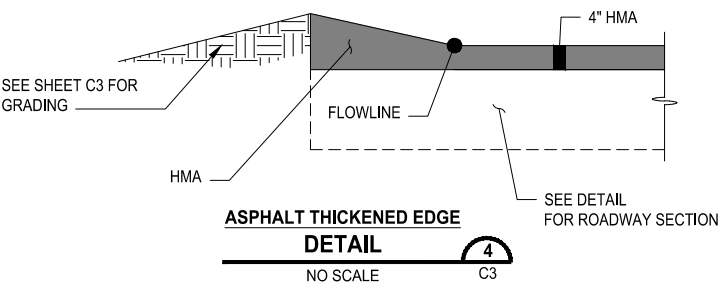
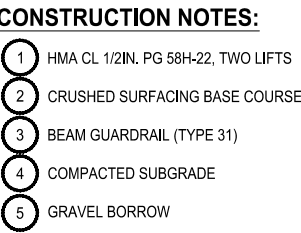
DESIGN BY: D. DINKUHN WA P.E.# 35814 DATE: 1/2024	DRAWN BY: M. BIGGS DATE: 1/2024	CHECKED BY: G. FRIDRIKSSON WA P.E.# 43786 DATE: 1/2024
---	------------------------------------	--


SECTION, TOWNSHIP, RANGE: S32, T24N, R1E, W.M.
GRANT/LOAN INFORMATION

PARISH CREEK FISH PASSAGE BARRIER REMOVAL
CREEK LONG PROFILE

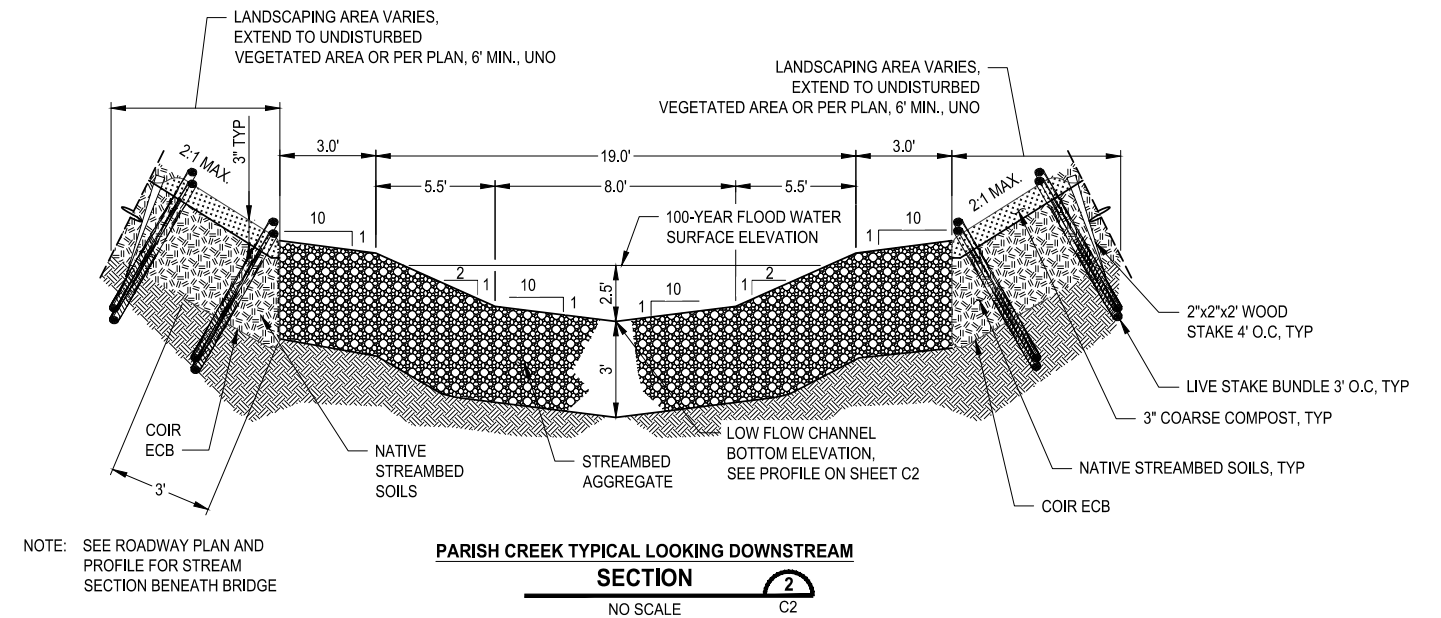
SHEET 8 OF 13
PN: 882
DWG C-3

FILE: 20240116_MB-PARISH CREEK_LAYOUT: C-3_PATH: T:\PROJECT FILES\PROJECT - Stormwater\882 - Parish Creek Culvert Replacement\500 DESIGN PHASE2 30% DESIGN\CAD based on Topo_PLOTTED BY: Mark Biggs DATE: Tuesday, January 16, 2024 12:32:48 PM



 CITY OF BREMERTON ENGINEER STAMP	NO.	REVISIONS	DATE	BY	CITY OF BREMERTON DEPARTMENT OF PUBLIC WORKS & UTILITIES ENGINEERING DIVISION	SECTION, TOWNSHIP, RANGE: S32, T24N, R1E, W.M.	PARISH CREEK FISH PASSAGE BARRIER REMOVAL ROADWAY DETAILS	SHEET 9 OF 13
						GRANT/LOAN INFORMATION		PN: 882
								DWG C-4
					DESIGN BY: D. DINKUHN WA P.E.# 35814 DATE: 1/2024	DRAWN BY: M. BIGGS DATE: 1/2024	CHECKED BY: G. FRIDRIKSSON WA P.E.# 43786 DATE: 1/2024	

FILE: 20240116_MB_PARISH CREEK LAYOUT: C-4 PATH: T:\PROJECT FILES\PROJECT - Stormwater\882 - Parish Creek Culvert Replacement\500 DESIGN PHASE\30% DESIGN\CAD based on Topo PLOTTED BY: Mark Biggs DATE: Tuesday, January 16, 2024 12:32:53 PM



SHEET
0 OF 13
882
DWG
C-5