

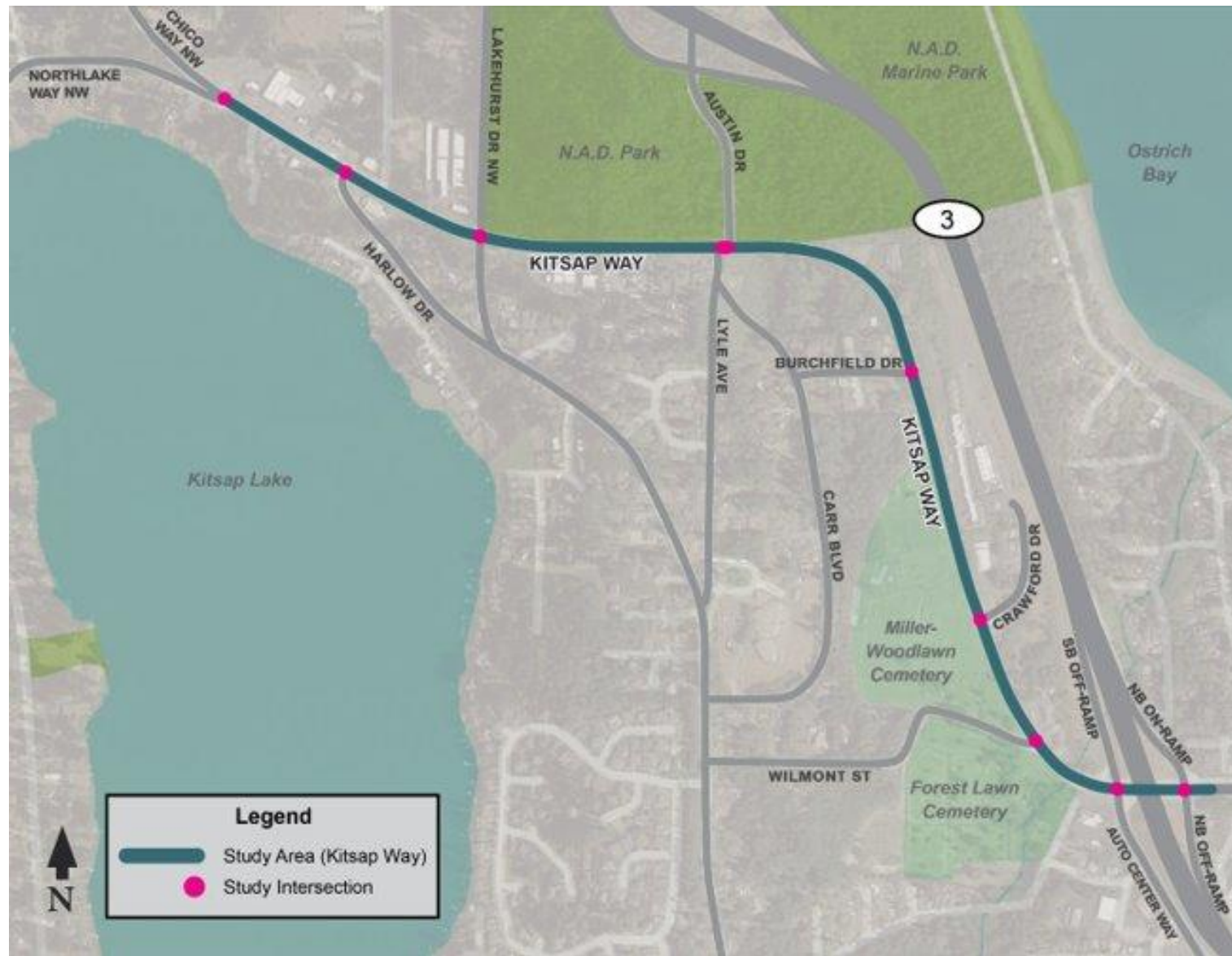
West Kitsap Way: Steering Committee

March 29, 2023



AGENDA

- Welcome and introductions
- Recap of 1st meeting
- Roles and responsibilities
- Evaluation criteria
- Draft alternatives
- Next steps



Introductions

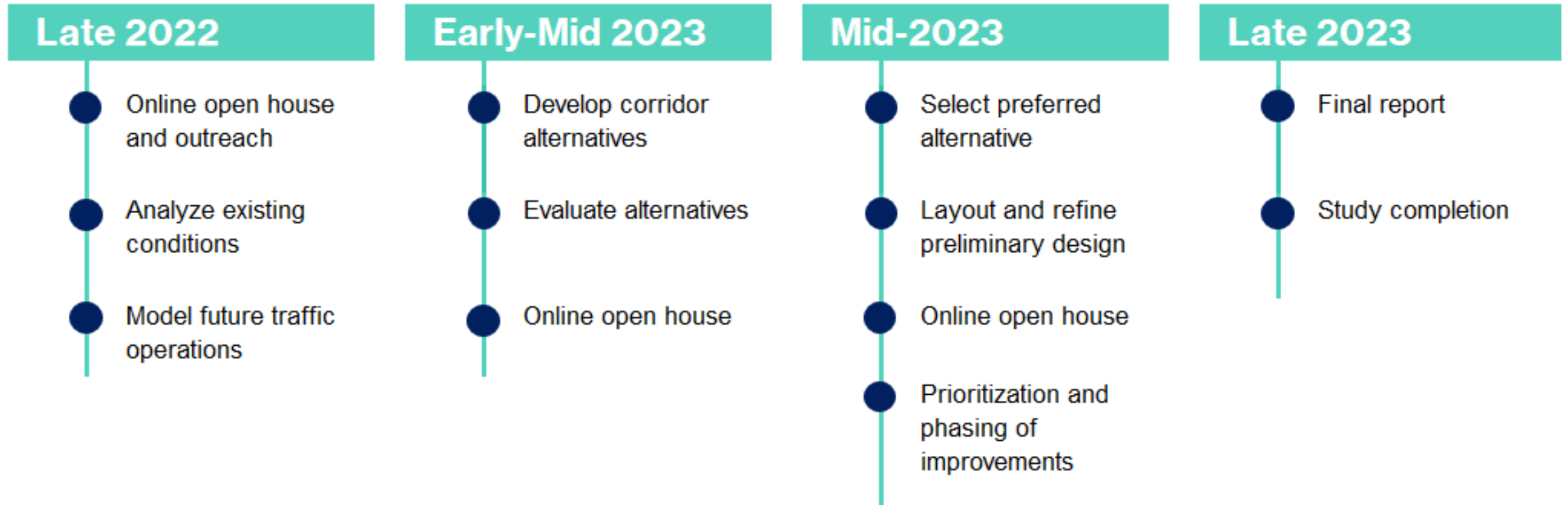
- Introduce yourself
- Where did you go on your last vacation?



Recap of Meeting #1

- Project Introduction
- Schedule
- Study Purpose
- Roles and Responsibilities
- Project Update
- Community Open House #1 Recap
- Criteria for Development and Evaluation of Alternatives
- Next Steps

Schedule



Roles and Responsibilities

Steering Committee

- Identifying and representing interests of your group or agency.
- Being active participants.
- Providing thoughts and advice on project needs, context, alternatives and priorities.
- Respecting differing priorities and seeking common ground.



Project Update

- 2050 forecast: 13,000 vehicles a day. This means Kitsap Way can be designed with one through travel lane in each direction.
- Draft alternatives prepared for discussion and review.
- Corridor stakeholder outreach event schedule for April.
- Open House #2 scheduled for June.

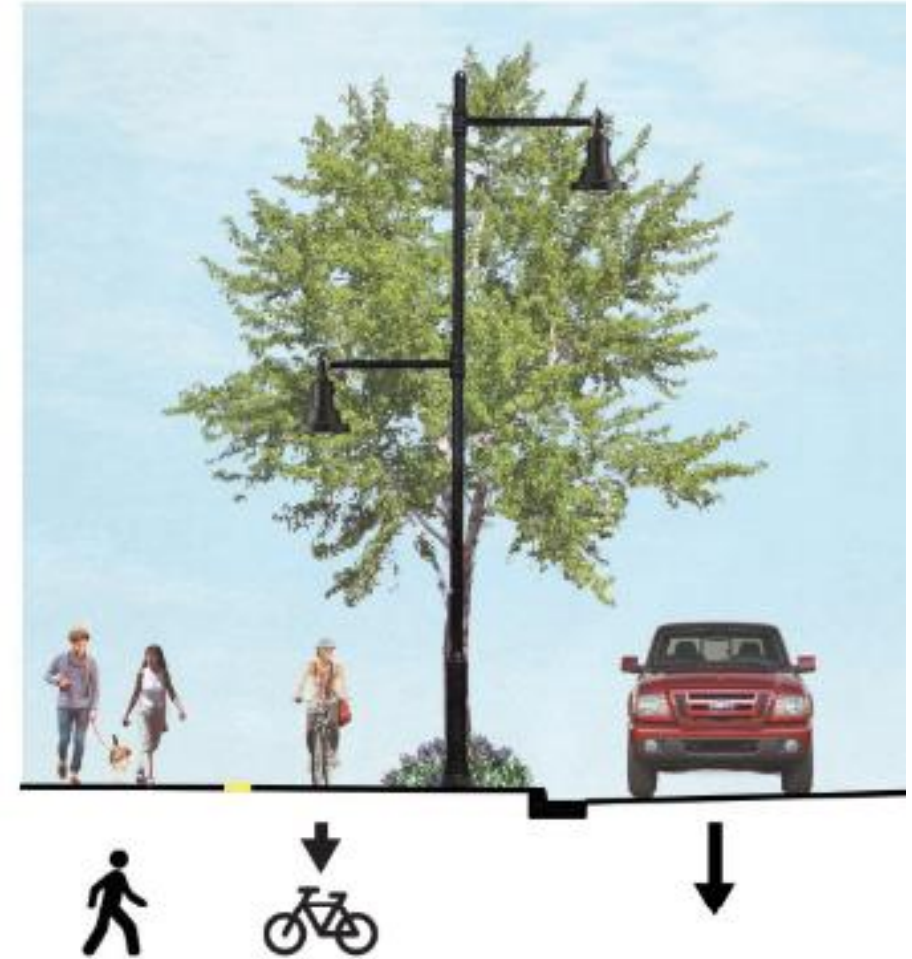


Criteria to Develop Alternatives

- **Safety** – address existing and potential deficiencies.
- **Pedestrian and bicycle** – provide all ages and all abilities facilities with low “level of stress” facilities.
- **Traffic operations** – support future volumes and operations.
- **Transit operations** – accommodate corridor bus operations.
- **Vehicle access to properties** – provide property access and parking.
- **Property impacts** – amount of property and right of way required.


Alternatives Development


- Three levels of alternatives: Low, Medium, and High reflecting impacts and costs.
- All alternatives have one travel lane in each direction and either a left turn lane or raised median.
- Alternatives show various pedestrian and bicycle options that separate a vehicles and non-motorized users.
- Layouts of business district alternatives to understand impacts to access and parking.




Alternatives Analysis Example

Category	Criteria	Alternative A Lower Impact	Alternative B Medium Impact	Alternative C Higher Impact
Public and Stakeholder Preference	Favorable feedback from Public.			
Safety	Safety improvements based on Crash Modification Factors.			
Pedestrian and Bicycle	Bicycle and Pedestrian Level of Stress.			
Intersection Traffic Operations	Level of Service and Vehicle queues.			
Transit Operations	Accommodates transit stops.			
Access to Property (business district)	Manages access while allowing access to parking and driveways.			
Property Impacts (business district)	Right of Way required.			
Cost	Cost for construction.	↑ Lower cost.	⇌ Moderate cost.	↓ Higher cost for intersection improvements.
OVERALL	Overall assessment.			

 Surpasses criterion

 Meets criterion

 Does not meet criterion

Next Steps

- Project team will refine draft improvement alternatives.
- Steering Committee will meet to evaluate the alternatives.
- Alternatives and evaluation presented at Open House 2.



Review of Draft Alternatives