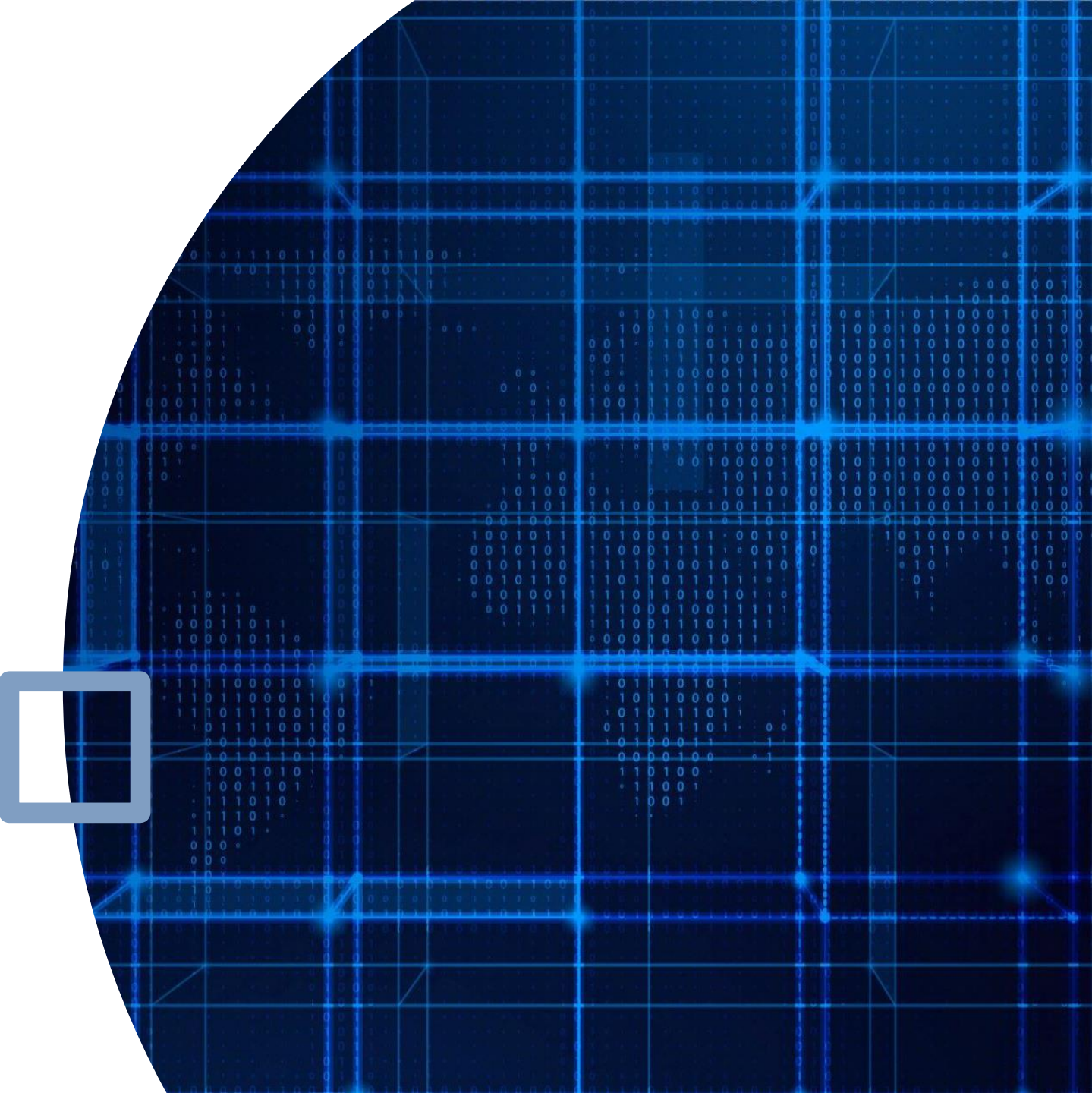


Sunday Service Proposal



Service Offerings

- Hours of service: 8am to 4pm
- Routed Service: 4 Trunk Routes, to be introduced over 3 phases.
- On Demand: With timed stops
- Scheduling: App-based and through call center



Prep Work Needed

43 total operators needed to resume pre-pandemic service levels and add Sunday service.

- 12 additional operators needed to maintain current service levels.
- 24 additional operators needed to resume pre-pandemic service levels.
- 7 additional operators needed to add Sunday service.
- Current recruitment rate with attrition is 4.98 (Avg since January of 2022). Prior to the holidays months we have experienced an increase in the recruitment rates with class sizes approaching 10 individuals per class.

On Demand Software Procurement – RFP

Marketing to Educate Public on New Service

- Soft Launch
- Hard Launch

Phased Approach

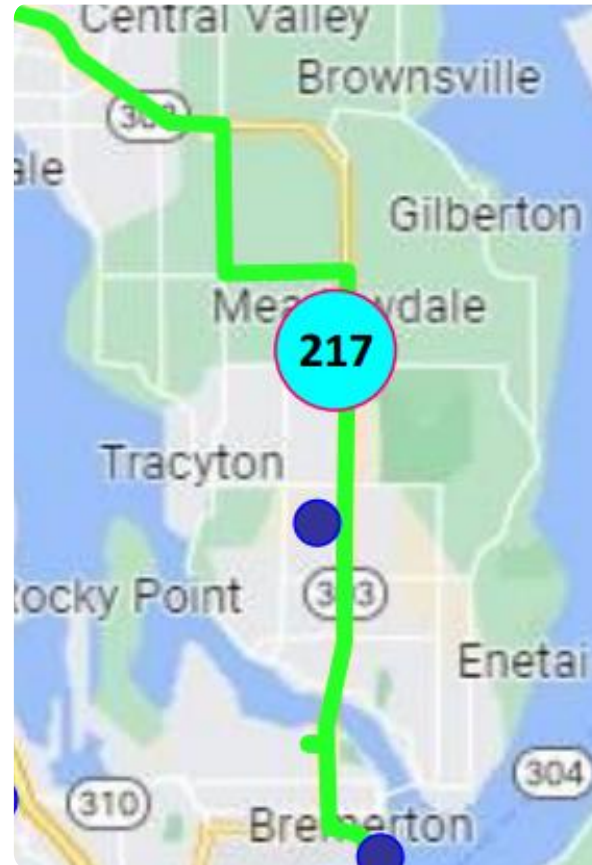
- **Phase 1 - Bremerton**
Target Date: August 2023
- **Phase 2 - Port Orchard, Poulsbo and Silverdale**
Target Date: December 2023
- **Phase 3 - Bainbridge Island**
Target Date: February 2024

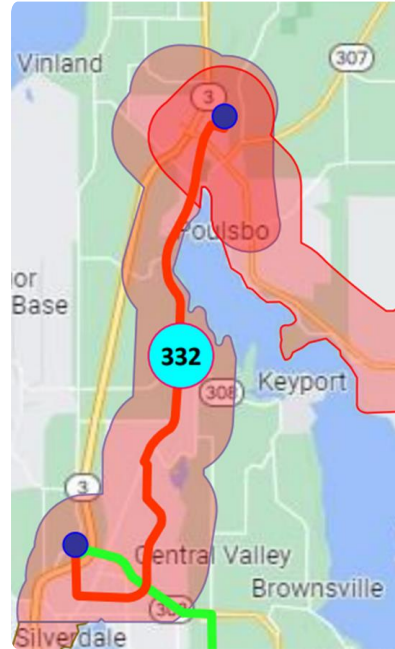
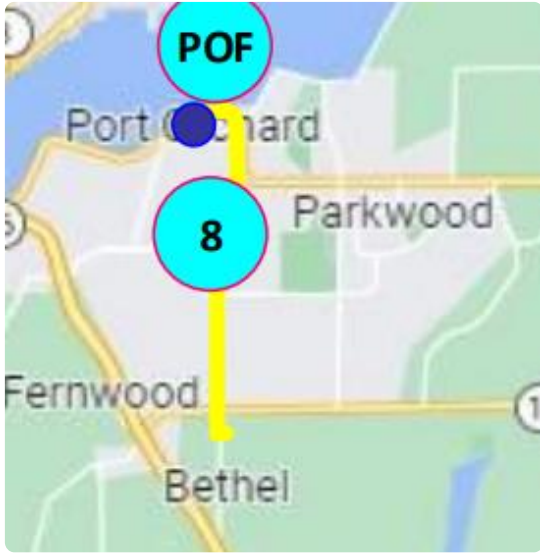
Phase 1
August 2023

Trunk Route
217 – Every 30 Minutes

On Demand Service
4 Vehicles
(Can be adjusted based on demand)

Timed Stops - TBD





Phase 2
December 2023

Trunk Route(s)

Port Orchard, Route 8 – Every 30 Minutes
Poulsbo and Silverdale, Route 332 – Every 60
Minutes

On Demand Service

2 Vehicles Port Orchard
4 Vehicles Poulsbo and Silverdale
(Can be adjusted based on demand)

Timed Stops - TBD

Phase 3
February 2024

Trunk Route
Bainbridge, Route 390 – Every 60
Minutes

On Demand Service
2 Vehicles
(Can be adjusted based on demand)

Timed Stops - TBD

